

Cancer in Central and South America

PANAMA

This country profile for the Cancer in Central and South America project provides, for each participating cancer registry tables and graphics showing numbers of cases and rates by year, sex and age group for major sites of cancer together with a population pyramid. A country summary is also provided based on aggregated registry data and national mortality data from the WHO mortality database:

(http://www.who.int/healthinfo/statistics/mortality_rawdata/en/index.html)

Citation of any of these data should be in the following format:

“Sierra MS, Abriata MG, Barrios E, Bravo LE, Cueva P, Fernandez L, Pineros M, Rebelo M, de Vries E, Forman D. Editors on behalf of the Cancer in Central and South America Working Group (2016). Cancer in Central and South America. Lyon: International Agency for Research on Cancer. Available from: http://www-dep.iarc.fr/CSU_resources.htm accessed [date].”

Registry Summary Tables and Figures

PANAMA, NATIONAL CANCER REGISTRY¹ (2012)

Registry Director*: Dr Nedelka Lavinia Pinzón Solé

Registry Staff*: Amarilis Yadira Castillo Fernández, Edwin Esteban Villalaz Becerra, Raquel Sonalis Arcia Morán, Juan Carlos Alcedo Velarde, Aníbal Villa-Real Cruz, Leticia María Fernández Garrote (Advisor)

*Director and staff as notified at time of call for data in 2013. Current contact information for cancer registries in the region can be found at: http://www.iacr.com.fr/index.php?option=com_comprofiler&task=usersList&listid=5.

¹ Registro Hospitalario de Cáncer. Instituto Oncológico Nacional (RHC-ION)

PANAMA (2012)
Hospital Base: Case Series

MALES

FEMALES

SITE	ALL CASES				MALES				FEMALES				ICD10
	ALL CASES	%	UNKAGE	MV (%)	DCO (%)	Rank#	ALL CASES	%	UNKAGE	MV (%)	DCO (%)	Rank#	
Lip, oral cavity, and pharynx (C00-14)	54	4.7	0	98	0	5	23	1.3	0	100	0	13	C00-14
Oesophagus (C15)	24	2.1	0	100	0	9.5	6	0.3	0	100	0	20.5	C15
Stomach (C16)	102	8.8	0	99	0	4	83	4.8	0	96	0	6	C16
Colon (C18)	90	7.8	0	99	0		94	5.4	0	99	0		C18
Rectum (C19-20)	47	4.1	0	100	0		47	2.7	0	98	0		C19-20
Colorectal (C18-20)	137	11.8	0	99	0	2	141	8.2	0	99	0	3	C18-20
Anus (C21)	7	0.6	0	100	0	23	10	0.6	0	100	0	19	C21
Colon, rectum and anus (C18-21)	144	12.4	0	99	0		151	8.7	0	99	0		C18-21
Liver (C22)	18	1.6	0	61	0	14.5	17	1.0	0	71	0	15.5	C22
Gallbladder (C23-24)	18	1.6	0	89	0	14.5	16	0.9	0	88	0	17	C23-24
Pancreas (C25)	24	2.1	0	63	0	9.5	23	1.3	0	65	0	13	C25
Nose, sinuses (C30-31)	10	0.9	0	100	0	19	1	0.1	0	100	0	26.5	C30-31
Larynx (C32)	44	3.8	0	100	0	6	4	0.2	0	100	0	24	C32
Lung, trachea and bronchus (C33-34)	108	9.3	0	96	0	3	68	3.9	0	99	0	8	C33-34
Melanoma of skin (C43)	9	0.8	0	100	0	20.5	17	1.0	0	100	0	15.5	C43
Mesothelioma (C45)	1	0.1	0	100	0	27	1	0.1	0	100	0	26.5	C45
Kaposi sarcoma (C46)	8	0.7	0	100	0	22	3	0.2	0	100	0	25	C46
Breast (C50)	4	0.3	0	100	0	26	548	31.7	0	100	0	1	C50
Cervix uteri (C53)							210	12.1	0	100	0	2	C53
Corpus uteri (C54)							119	6.9	0	100	0	4	C54
Ovary (C56)							71	4.1	0	92	0	7	C56
Penis (C60)	5	0.4	0	100	0	24.5							C60
Prostate (C61)	279	24.1	0	100	0	1							C61
Testis (C62)	12	1.0	0	100	0	17.5							C62
Kidney (C64)	40	3.5	0	90	0	7	27	1.6	0	93	0	11	C64
Bladder (C67)	9	0.8	0	100	0	20.5	5	0.3	0	100	0	22.5	C67
Brain, CNS (C70-72)	17	1.5	0	76	0	16	30	1.7	0	97	0	10	C70-72
Thyroid (C73)	21	1.8	0	100	0	12.5	91	5.3	0	100	0	5	C73
Hodgkin disease (C81)	12	1.0	0	100	0	17.5	5	0.3	0	80	0	22.5	C81
Non-Hodgkin lymphoma (C82-85,C96)	38	3.3	0	100	0	8	36	2.1	0	100	0	9	C82-85,C96
Multiple myeloma (C88+C90)	5	0.4	0	100	0	24.5	6	0.3	0	83	0	20.5	C88+C90
Lymphoid leukaemia (C91)	8	0.7	0	75	0		4	0.2	0	25	0		C91
Myeloid leukaemia (C92-94)	6	0.5	0	33	0		9	0.5	0	67	0		C92-94
Leukaemia unspecified (C95)	7	0.6	0	86	0		2	0.1	0	100	0		C95
Leukaemia (C91-95)	21	1.8	0	67	0	12.5	15	0.9	0	60	0	18	C91-95
Other and unspecified (O&U)	22	1.9	0	100	0	11	23	1.3	0	96	0	13	O&U
All sites but C44 (ALLbC44)	1083	93.4	0	96	0		1668	96.4	0	98	0		ALLbC44
All sites (ALL)	1159	100.0	0	96	0		1730	100.0	0	98	0		ALL

UNK, Unknown; MV, Microscopic Verification; DCO, Death Certificate Only
#Rank based on highest number of cases excluding: All sites but C44 and All sites

Country's Summary Tables and Figures

PANAMA^{1,2,3}

(2003-2007²)

¹ Country's incidence rates were not estimated. Case series are presented using data from the National Cancer Registry of Panama. Instituto Oncológico Nacional (RHC-ION)

² National mortality data obtained from the WHO mortality database:
http://www.who.int/healthinfo/statistics/mortality_rawdata/en/index.html

³ Methodological details are included in "Cancer in Central and South America: Methodology"
<http://dx.doi.org/10.1016/j.canep.2016.07.020>

PANAMA (2003-2007)
Number of Deaths in Major Diagnosis Groups
per Calendar Year

SITE	YEAR					TOTAL n (%)
	2003 n (%)	2004 n (%)	2005 n (%)	2006 n (%)	2007 n (%)	
MALES						
Lip, oral cavity, and pharynx (C00-C14)	35 (2.9)	27 (2.4)	30 (2.5)	26 (2.1)	32 (2.3)	150 (2.4)
Digestive organs (C15-C26)	443 (37.3)	451 (39.8)	473 (38.7)	494 (39.3)	537 (39.3)	2398 (38.9)
Respiratory organs (C30-C39)	181 (15.2)	173 (15.3)	190 (15.5)	206 (16.4)	195 (14.3)	945 (15.3)
Bone, cartilage, and skin (C40-C44)	7 (0.6)	8 (0.7)	9 (0.7)	4 (0.3)	11 (0.8)	39 (0.6)
Male genitalia (C60-C63)	271 (22.8)	237 (20.9)	260 (21.3)	273 (21.7)	317 (23.2)	1358 (22.0)
Urinary organs (C64-C68)	43 (3.6)	37 (3.3)	42 (3.4)	38 (3.0)	39 (2.9)	199 (3.2)
Eye, brain, and thyroid (C69-C75)	42 (3.5)	54 (4.8)	48 (3.9)	48 (3.8)	62 (4.5)	254 (4.1)
Hematopoietic (C81-C96)	129 (10.8)	119 (10.5)	128 (10.5)	136 (10.8)	127 (9.3)	639 (10.4)
All sites	1189 (100.0)	1133 (100.0)	1223 (100.0)	1258 (100.0)	1367 (100.0)	6170 (100.0)
FEMALES						
Lip, oral cavity, and pharynx (C00-C14)	9 (0.9)	12 (1.1)	18 (1.8)	16 (1.5)	23 (2.1)	78 (1.5)
Digestive organs (C15-C26)	363 (38.0)	423 (39.9)	403 (39.2)	419 (39.5)	424 (38.4)	2032 (39.0)
Respiratory organs (C30-C39)	82 (8.6)	81 (7.6)	78 (7.6)	80 (7.5)	61 (5.5)	382 (7.3)
Bone, cartilage, and skin (C40-C44)	4 (0.4)	4 (0.4)	6 (0.6)	3 (0.3)	9 (0.8)	26 (0.5)
Breast (C50)	119 (12.4)	132 (12.4)	132 (12.8)	134 (12.6)	151 (13.7)	668 (12.8)
Female genitalia (C51-C58)	210 (22.0)	212 (20.0)	191 (18.6)	196 (18.5)	186 (16.8)	995 (19.1)
Urinary organs (C64-C68)	19 (2.0)	21 (2.0)	23 (2.2)	31 (2.9)	25 (2.3)	119 (2.3)
Eye, brain, and thyroid (C69-C75)	41 (4.3)	63 (5.9)	48 (4.7)	50 (4.7)	44 (4.0)	246 (4.7)
Hematopoietic (C81-C96)	99 (10.4)	101 (9.5)	91 (8.9)	102 (9.6)	134 (12.1)	527 (10.1)
All sites	956 (100.0)	1061 (100.0)	1028 (100.0)	1061 (100.0)	1105 (100.0)	5211 (100.0)
BOTH SEXES						
Lip, oral cavity, and pharynx (C00-C14)	44 (2.1)	39 (1.8)	48 (2.1)	42 (1.8)	55 (2.2)	228 (2.0)
Digestive organs (C15-C26)	806 (37.6)	874 (39.8)	876 (38.9)	913 (39.4)	961 (38.9)	4430 (38.9)
Respiratory organs (C30-C39)	263 (12.3)	254 (11.6)	268 (11.9)	286 (12.3)	256 (10.4)	1327 (11.7)
Bone, cartilage, and skin (C40-C44)	11 (0.5)	12 (0.5)	15 (0.7)	7 (0.3)	20 (0.8)	65 (0.6)
Urinary organs (C64-C68)	62 (2.9)	58 (2.6)	65 (2.9)	69 (3.0)	64 (2.6)	318 (2.8)
Eye, brain, and thyroid (C69-C75)	83 (3.9)	117 (5.3)	96 (4.3)	98 (4.2)	106 (4.3)	500 (4.4)
Hematopoietic (C81-C96)	228 (10.6)	220 (10.0)	219 (9.7)	238 (10.3)	261 (10.6)	1166 (10.2)
All sites	2145 (100.0)	2194 (100.0)	2251 (100.0)	2319 (100.0)	2472 (100.0)	11381 (100.0)

PANAMA (2003-2007)
Age Standardized Mortality Rate (World Population) per 100,000
in Major Diagnosis Groups per Calendar Year

SITE	YEAR					TOTAL ASMR (%)
	2003 ASMR (%)	2004 ASMR (%)	2005 ASMR (%)	2006 ASMR (%)	2007 ASMR (%)	
MALES						
Lip, oral cavity, and pharynx (C00-C14)	2.8 (3.1)	2.1 (2.5)	2.1 (2.4)	2.0 (2.3)	2.1 (2.4)	2.2 (2.5)
Digestive organs (C15-C26)	34.1 (38.1)	33.5 (40.3)	34.2 (39.5)	34.8 (40.4)	36.0 (40.2)	34.6 (39.7)
Respiratory organs (C30-C39)	14.2 (15.9)	13.2 (15.8)	14.0 (16.1)	14.4 (16.7)	13.2 (14.7)	13.8 (15.8)
Bone, cartilage, and skin (C40-C44)	0.5 (0.6)	0.6 (0.7)	0.7 (0.8)	0.3 (0.3)	0.7 (0.8)	0.5 (0.6)
Male genitalia (C60-C63)	19.4 (21.7)	16.6 (19.9)	17.8 (20.5)	18.0 (20.9)	19.7 (22.0)	18.3 (21.0)
Urinary organs (C64-C68)	3.2 (3.6)	2.9 (3.5)	3.0 (3.5)	2.6 (3.0)	2.7 (3.0)	2.9 (3.3)
Eye, brain, and thyroid (C69-C75)	3.0 (3.4)	3.7 (4.5)	3.3 (3.8)	3.3 (3.8)	3.9 (4.4)	3.5 (4.0)
Hematopoietic (C81-C96)	9.4 (10.5)	8.5 (10.2)	8.8 (10.1)	9.1 (10.5)	8.3 (9.3)	8.8 (10.1)
All sites	89.3 (100.0)	83.3 (100.0)	86.7 (100.0)	86.2 (100.0)	89.5 (100.0)	87.0 (100.0)
FEMALES						
Lip, oral cavity, and pharynx (C00-C14)	0.5 (0.8)	0.7 (1.0)	1.1 (1.6)	1.0 (1.5)	1.4 (2.1)	1.0 (1.4)
Digestive organs (C15-C26)	25.6 (37.9)	28.0 (38.7)	26.4 (38.8)	26.6 (39.3)	25.9 (38.6)	26.5 (38.7)
Respiratory organs (C30-C39)	5.7 (8.5)	5.5 (7.7)	5.3 (7.8)	5.1 (7.5)	3.6 (5.3)	5.0 (7.3)
Bone, cartilage, and skin (C40-C44)	0.3 (0.5)	0.3 (0.4)	0.4 (0.5)	0.2 (0.3)	0.5 (0.7)	0.3 (0.5)
Breast (C50)	8.7 (13.0)	9.3 (12.9)	9.1 (13.4)	8.8 (13.0)	9.3 (13.9)	9.0 (13.2)
Female genitalia (C51-C58)	14.6 (21.7)	14.7 (20.4)	12.4 (18.2)	12.6 (18.7)	11.4 (17.1)	13.1 (19.2)
Urinary organs (C64-C68)	1.4 (2.1)	1.3 (1.9)	1.5 (2.2)	1.9 (2.8)	1.5 (2.2)	1.5 (2.3)
Eye, brain, and thyroid (C69-C75)	2.9 (4.3)	4.4 (6.1)	3.2 (4.7)	3.1 (4.5)	2.9 (4.3)	3.3 (4.8)
Hematopoietic (C81-C96)	6.8 (10.1)	6.6 (9.2)	6.0 (8.8)	6.6 (9.7)	8.0 (11.9)	6.8 (10.0)
All sites	67.4 (100.0)	72.2 (100.0)	67.9 (100.0)	67.5 (100.0)	67.1 (100.0)	68.4 (100.0)
BOTH SEXES						
Lip, oral cavity, and pharynx (C00-C14)	1.7 (2.1)	1.4 (1.8)	1.6 (2.1)	1.5 (2.0)	1.8 (2.3)	1.6 (2.0)
Digestive organs (C15-C26)	29.7 (38.2)	30.7 (39.7)	30.2 (39.4)	30.6 (40.1)	30.7 (39.7)	30.4 (39.4)
Respiratory organs (C30-C39)	9.9 (12.7)	9.2 (11.9)	9.5 (12.4)	9.6 (12.5)	8.2 (10.6)	9.2 (12.0)
Bone, cartilage, and skin (C40-C44)	0.4 (0.5)	0.4 (0.6)	0.5 (0.7)	0.2 (0.3)	0.6 (0.7)	0.4 (0.6)
Urinary organs (C64-C68)	2.3 (2.9)	2.1 (2.7)	2.2 (2.9)	2.2 (2.9)	2.1 (2.7)	2.2 (2.8)
Eye, brain, and thyroid (C69-C75)	3.0 (3.8)	4.1 (5.3)	3.3 (4.3)	3.2 (4.2)	3.4 (4.4)	3.4 (4.4)
Hematopoietic (C81-C96)	8.1 (10.4)	7.5 (9.7)	7.3 (9.6)	7.8 (10.2)	8.2 (10.5)	7.8 (10.1)
All sites	77.7 (100.0)	77.2 (100.0)	76.6 (100.0)	76.3 (100.0)	77.5 (100.0)	77.1 (100.0)

PANAMA (2003-2007)
Mortality per 100,000 by Age Group (years)
Males

SITE	ALL DEATHS	UNK AGE	0-4	5-9	10-14	15-19	20-24	25-29	30-34	35-39	40-44	45-49	50-54	55-59	60-64	65-69	70-74	75+	CRUDE RATE	ASMR (W)	CUM. RATE (0-74)†	Rank‡	ICD10	
Lip, oral cavity, & pharynx (C00-14)	150	0	0.1	.	.	0.6	.	.	.	0.3	0.4	1.2	2.6	5.3	7.6	16.7	16.1	28.4	1.8	2.2	0.3	9	C00-14	
Oesophagus (C15)	143	0	.	.	.	0.3	.	.	.	0.2	0.8	0.9	2.9	8.2	8.0	8.9	19.3	25.4	1.8	2.1	0.2	10	C15	
Stomach (C16)	717	0	.	.	0.1	0.1	0.6	1.2	2.7	2.7	2.9	6.9	10.4	22.1	31.2	66.1	98.3	146.2	8.8	10.4	1.2	3	C16	
Colon (C18)	375	0	.	.	0.3	.	0.1	0.5	0.8	0.8	1.8	3.3	5.2	12.1	17.8	25.6	38.7	95.4	4.6	5.3	0.5		C18	
Rectum (C19-C20)	0	0	0.0	0.0	0.0	0.0		C19-C20
Colorectal (C18-20)	0	0	0.0	0.0	0.0	0.0	23	C18-20
Rectum and anus (C19-21)	114	0	.	.	.	0.1	.	0.2	0.2	0.2	0.6	1.4	2.3	4.3	6.2	8.3	12.9	23.0	1.4	1.7	0.2		C19-21	
Colon, rectum and anus (C18-21)	489	0	.	.	0.3	0.1	0.1	0.6	1.0	1.0	2.3	4.7	7.5	16.4	24.1	34.0	51.6	118.4	6.0	7.0	0.7		C18-21	
Liver (C22)	288	0	0.1	.	0.3	0.5	0.3	0.7	0.5	0.7	0.4	3.6	2.0	6.8	11.1	21.5	38.7	51.3	3.2	3.7	0.4	5	C22	
Gallbladder (C23-24)	54	0	0.4	0.2	1.5	1.1	3.6	2.4	6.4	13.9	0.7	0.8	0.1	15	C23-24	
Pancreas (C25)	229	0	0.1	0.1	.	0.3	1.0	1.7	5.2	5.7	16.0	14.9	25.0	53.2	2.8	3.3	0.3	6	C25	
Nose, sinuses (C30-31)	0	0	0.0	0.0	0.0	0.0	23	C30-31
Larynx (C32)	111	0	0.2	0.2	1.2	0.3	4.6	5.8	7.7	16.1	26.6	1.4	1.6	0.2	13	C32	
Lung, trachea and bronchus (C33-34)	834	0	0.1	.	.	0.1	0.1	0.6	0.7	1.8	1.8	5.4	12.2	23.5	50.3	68.5	103.1	197.5	10.2	12.2	1.3	2	C33-34	
Melanoma of skin (C43)	39	0	0.3	0.2	0.5	0.3	1.4	2.2	2.4	3.2	9.7	0.5	0.5	0.1	16	C43	
Mesothelioma (C45)	5	0	0.4	.	.	0.8	1.8	0.1	0.1	0.1	0.0	20	C45
Kaposi sarcoma (C46)	0	0	0.0	0.0	0.0	0.0	23	C46
Breast (C50)	0	0	0.0	0.0	0.0	0.0	23	C50
Penis (C60)	0	0	0.0	0.0	0.0	0.0	23	C60
Prostate (C61)	1327	0	0.6	1.4	2.6	9.6	27.2	68.5	150.7	555.1	16.3	17.9	1.3	1	C61	
Testis (C62)	31	0	.	.	.	0.8	1.3	0.3	0.3	0.3	0.2	.	0.9	.	0.9	2.4	0.8	0.6	0.4	0.4	0.0	18	C62	
Kidney (C64)	116	0	0.3	0.4	.	0.3	.	0.1	.	0.3	.	2.1	3.2	3.9	7.6	8.9	13.7	15.1	1.4	1.7	0.2	12	C64	
Bladder (C67)	83	0	.	.	.	0.1	0.2	0.6	2.9	3.6	3.6	8.1	28.4	1.0	1.1	0.1	14	C67	
Brain, CNS (C70-72)	225	0	1.0	1.8	0.8	1.4	0.7	1.8	0.9	2.2	3.3	4.0	4.9	6.8	6.7	12.5	10.5	17.5	2.8	3.0	0.3	7	C70-72	
Thyroid (C73)	29	0	.	.	0.1	0.2	0.2	.	0.3	1.4	1.3	2.4	3.2	6.0	0.4	0.4	0.0	17	C73	
Hodgkin disease (C81)	24	0	0.1	0.2	0.3	.	.	0.5	.	0.2	0.2	0.2	.	1.1	0.4	1.8	1.6	3.0	0.3	0.3	0.0	19	C81	
Non-Hodgkin lymphoma (C82-85,C96)	206	0	.	0.4	0.8	0.8	0.4	1.2	0.6	1.5	1.2	1.2	3.8	9.3	8.5	13.7	19.3	30.8	2.5	2.9	0.3	8	C82-85,C96	
Multiple myeloma (C88+C90)	121	0	.	.	.	0.1	0.1	.	.	.	0.6	1.2	3.8	3.9	7.6	9.5	16.1	20.5	1.5	1.8	0.2	11	C88+C90	
Lymphoid leukaemia (C91)	0	0	0.0	0.0	0.0		C91
Myeloid leukaemia (C92-94)	0	0	0.0	0.0	0.0		C92-94
Leukaemia unspecified (C95)	0	0	0.0	0.0	0.0		C95
Leukaemia (C91-95)	288	0	1.4	1.0	1.6	2.5	2.2	1.9	1.1	2.2	3.5	2.4	4.6	7.1	5.3	11.9	20.1	39.9	3.5	3.8	0.3	4	C91-95	
All cancers but lung (C00-97/C33-34)	5336	0	3.9	4.5	4.8	6.9	8.0	11.1	8.4	16.8	24.5	40.5	69.0	136.5	210.2	337.5	580.9	1313.2	65.4	74.8	7.4		C00-97/C33-34	
All sites (ALL)	6170	0	4.0	4.5	4.8	6.9	8.2	11.3	9.0	17.4	26.3	45.9	81.2	160.1	260.6	426.1	684.0	1510.8	75.6	87.0	8.8		ALL	

UNK, Unknown; ASMR (W), Age Standardized Mortality Rate (World Population); CUM., Cumulative
†Percent
‡Rank based on highest ASMR excluding: All sites but lung and All sites

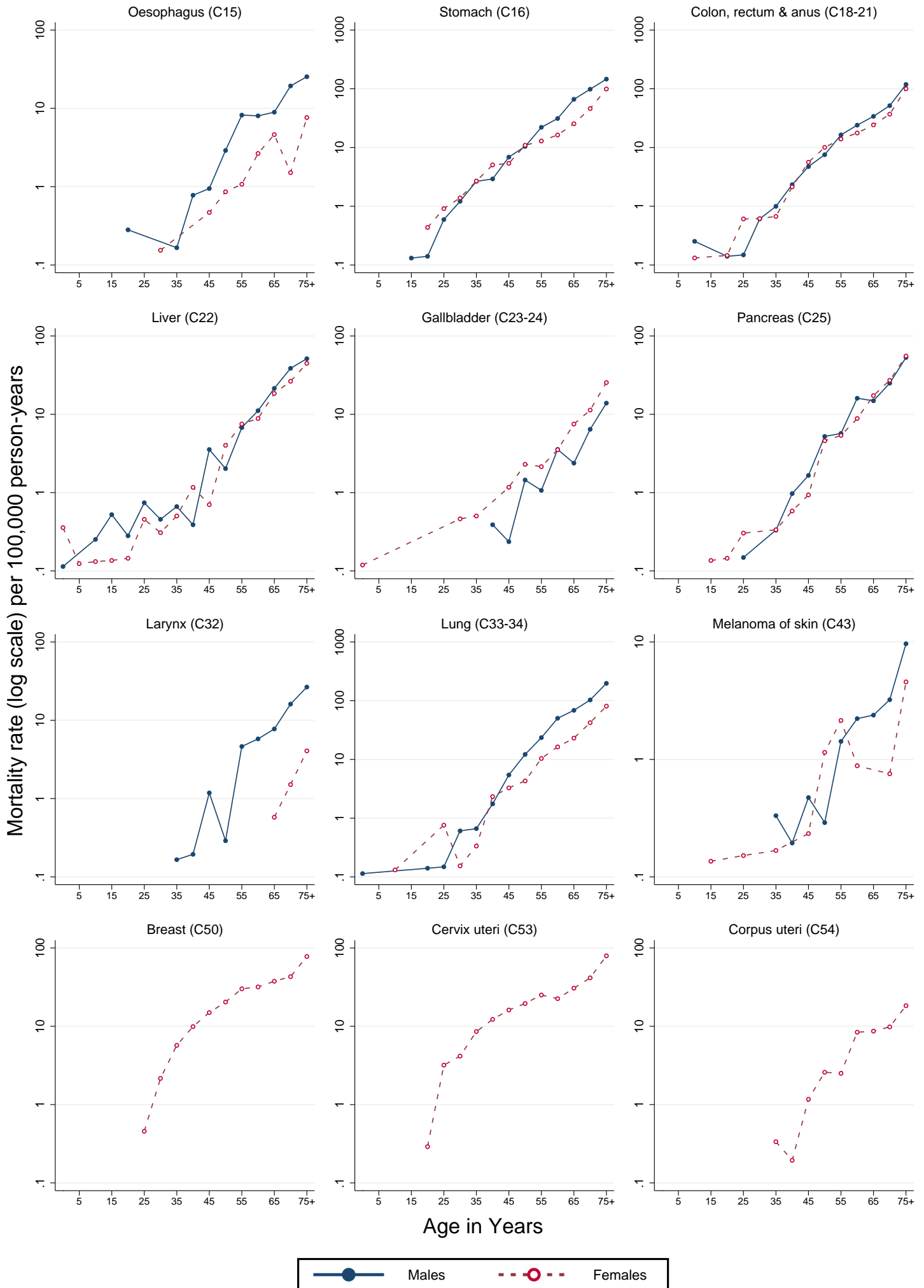
PANAMA (2003-2007)
Mortality per 100,000 by Age Group (years)
Females

SITE	ALL DEATHS	UNK AGE	0-4	5-9	10-14	15-19	20-24	25-29	30-34	35-39	40-44	45-49	50-54	55-59	60-64	65-69	70-74	75+	CRUDE RATE	ASMR (W)	CUM. RATE (0-74)†	Rank‡	ICD10	
Lip, oral cavity, & pharynx (C00-14)	78	0	0.2	0.1	0.2	0.2	0.2	0.5	1.1	0.7	2.2	3.5	7.6	21.9	1.0	1.0	0.1	14	C00-14	
Oesophagus (C15)	40	0	0.2	.	.	0.5	0.9	1.1	2.7	4.6	1.5	7.6	0.5	0.6	0.1	17	C15	
Stomach (C16)	494	0	.	.	.	0.4	0.9	1.4	2.7	5.1	5.4	10.9	12.9	12.9	16.4	25.4	46.1	99.2	6.2	6.4	0.6	3	C16	
Colon (C18)	352	0	.	.	0.1	0.1	0.2	0.5	0.7	1.6	4.4	7.8	10.7	13.7	19.1	25.7	81.4	4.4	4.5	0.4		C18		
Rectum (C19-C20)	0	0	0.0	0.0	0.0		C19-C20	
Colorectal (C18-20)	0	0	0.0	0.0	0.0	24	C18-20	
Rectum and anus (C19-21)	99	0	0.5	0.2	0.6	1.2	2.3	3.2	4.0	5.2	11.3	18.8	1.2	1.3	0.1		C19-21		
Colon, rectum and anus (C18-21)	451	0	.	.	0.1	0.1	0.6	0.6	0.7	2.1	5.6	10.1	14.0	17.7	24.3	37.0	100.2	5.6	5.9	0.6		C18-21		
Liver (C22)	234	0	0.4	0.1	0.1	0.1	0.5	0.3	0.5	1.2	0.7	4.0	7.5	8.8	18.5	26.4	44.8	2.9	3.1	0.3	7	C22		
Gallbladder (C23-24)	112	0	0.1	0.5	0.5	1.2	2.3	2.1	3.5	7.5	11.3	25.4	1.4	1.4	0.1	1.4	0.1	12	C23-24	
Pancreas (C25)	239	0	.	.	.	0.1	0.1	0.3	0.3	0.6	0.9	4.6	5.4	8.8	17.3	27.2	55.4	3.0	3.1	0.3	6	C25		
Nose, sinuses (C30-31)	0	0	0.0	0.0	0.0	24	C30-31	
Larynx (C32)	11	0	0.6	1.5	4.1	0.1	0.1	0.1	0.0	21	C32	
Lung, trachea and bronchus (C33-34)	371	0	.	.	0.1	.	0.8	0.2	0.3	2.3	3.3	4.3	10.4	16.4	23.1	42.3	80.9	4.6	4.9	0.5	4	C33-34		
Melanoma of skin (C43)	26	0	.	.	.	0.1	0.2	0.2	0.2	0.2	0.2	0.2	1.1	2.1	0.9	0.8	4.6	0.3	0.3	0.0	19	C43		
Mesothelioma (C45)	7	0	0.2	0.2	0.2	0.2	0.2	0.4	0.4	.	.	1.5	0.1	0.1	0.1	0.0	22	C45	
Kaposi sarcoma (C46)	0	0	0.0	0.0	0.0	24	C46	
Breast (C50)	688	0	0.5	2.2	5.7	9.9	15.0	20.4	30.1	31.8	37.6	43.0	77.8	8.3	9.0	1.0	1	C50	
Cervix uteri (C53)	686	0	.	.	.	0.3	3.2	4.2	8.6	12.2	16.1	19.5	25.1	22.5	30.6	41.5	79.3	8.5	9.0	0.9	2	C53		
Corpus uteri (C54)	107	0	0.3	0.2	0.2	0.2	1.2	2.6	2.5	8.4	8.7	9.8	18.3	1.3	1.5	0.2	11	C54	
Ovary (C56)	202	0	.	.	0.1	0.3	0.3	0.6	0.6	1.7	0.8	2.3	3.7	7.2	6.6	15.6	14.3	36.1	2.5	2.6	0.3	9	C56	
Kidney (C64)	70	0	0.1	0.1	0.3	.	0.2	0.2	0.2	0.3	0.4	0.2	1.4	3.2	4.4	2.3	5.3	12.7	0.9	0.9	0.1	15	C64	
Bladder (C67)	49	0	0.2	0.2	0.2	0.2	0.2	0.6	1.4	2.2	2.3	3.8	12.7	0.6	0.6	0.1	16	C67	
Brain, CNS (C70-72)	214	0	1.1	1.1	1.3	0.7	1.2	0.6	1.4	1.2	2.1	2.1	3.2	6.4	9.3	11.0	16.6	21.4	2.7	2.8	0.3	8	C70-72	
Thyroid (C73)	32	0	0.2	0.2	1.4	1.3	2.9	6.8	5.1	0.4	0.4	0.1	18	C73	
Hodgkin disease (C81)	15	0	.	.	.	0.1	0.2	0.2	0.2	0.2	0.2	0.3	0.4	0.4	1.7	0.8	2.5	0.2	0.2	0.2	0.0	20	C81	
Non-Hodgkin lymphoma (C82-85,C96)	153	0	0.4	0.4	0.1	0.1	0.5	0.5	0.5	1.7	1.6	2.9	4.7	4.4	7.5	13.6	27.5	1.9	2.0	0.2	10	C82-85,C96		
Multiple myeloma (C88+C90)	91	0	0.2	0.2	0.2	0.2	0.9	3.4	1.8	4.9	6.4	13.6	14.2	1.1	1.3	0.2	13	C88+C90	
Lymphoid leukaemia (C91)	0	0	0.0	0.0	0.0	0.0		C91
Myeloid leukaemia (C92-94)	0	0	0.0	0.0	0.0	0.0		C92-94
Leukaemia unspecified (C95)	0	0	0.0	0.0	0.0	0.0		C95
Leukaemia (C91-95)	288	0	1.4	1.6	1.8	3.7	2.5	1.5	1.4	1.8	2.3	2.6	2.3	5.7	8.4	7.5	9.8	32.0	3.3	3.4	0.3	5	C91-95	
All cancers but lung (C00-97/C33-34)	4840	0	4.8	4.0	4.7	6.4	6.1	11.6	15.6	29.4	43.7	62.9	106.6	150.4	189.6	288.8	391.9	810.2	60.3	63.5	6.5		C00-97/C33-34	
All sites (ALL)	5211	0	4.8	4.0	4.9	6.4	6.1	12.3	15.7	29.7	46.1	66.2	110.9	160.8	206.0	291.9	434.1	891.1	64.9	68.4	7.0		ALL	

UNK, Unknown; ASMR (W), Age Standardized Mortality Rate (World Population); CUM., Cumulative
†Percent
‡Rank based on highest ASMR excluding: All sites but lung and All sites

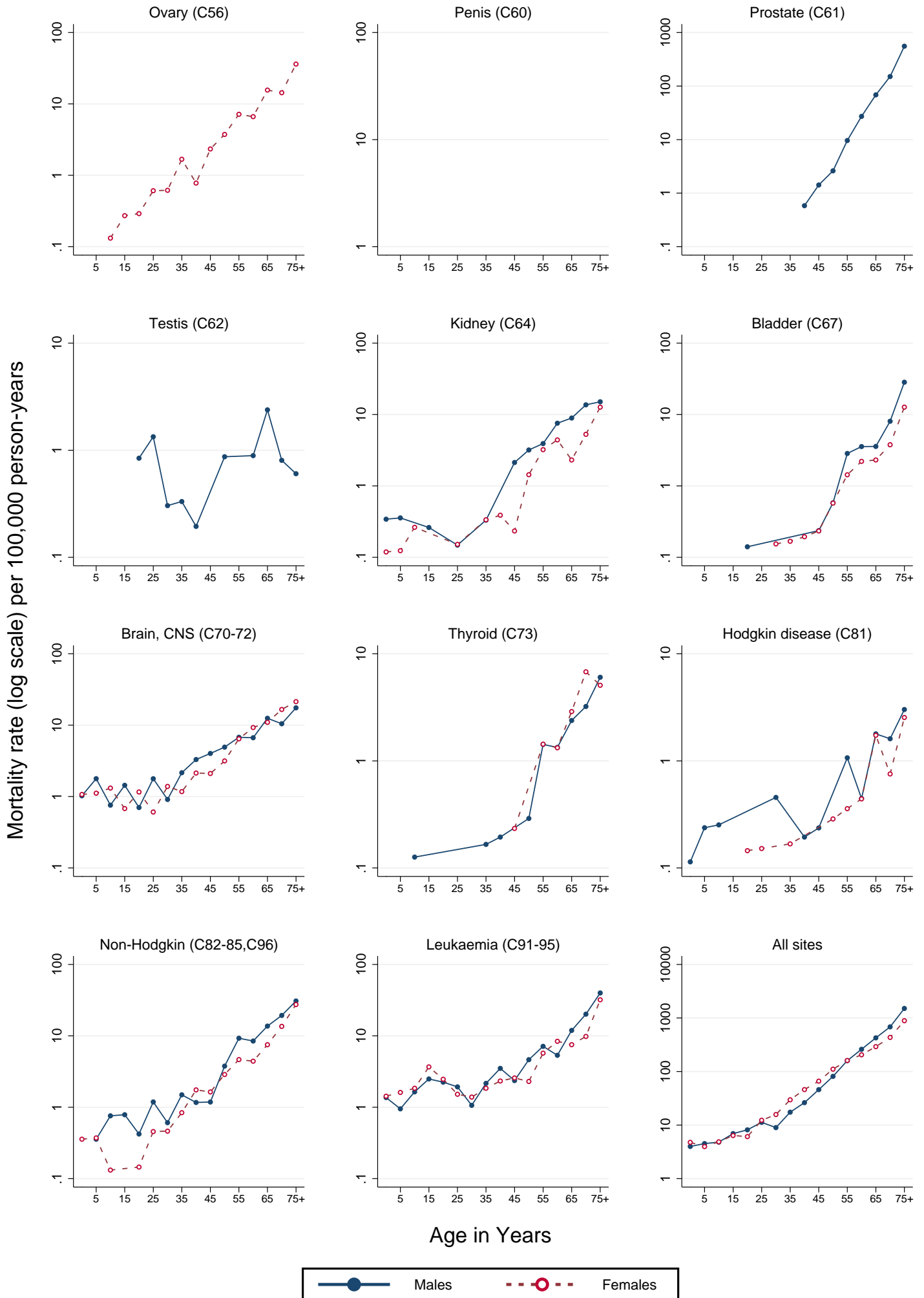
PANAMA (2003-2007)

Age-specific mortality rates per 100,000 person-years



PANAMA (2003-2007)

Age-specific mortality rates per 100,000 person-years



PANAMA (2003-2007)

Average annual person-years

