

Cancer in Central and South America

COSTA RICA

This country profile for the Cancer in Central and South America project provides, for each participating cancer registry tables and graphics showing numbers of cases and rates by year, sex and age group for major sites of cancer together with a population pyramid. A country summary is also provided based on aggregated registry data and national mortality data from the WHO mortality database:

(http://www.who.int/healthinfo/statistics/mortality_rawdata/en/index.html)

Citation of any of these data should be in the following format:

“Sierra MS, Abriata MG, Barrios E, Bravo LE, Cueva P, Fernandez L, Pineros M, Rebelo M, de Vries E, Forman D. Editors on behalf of the Cancer in Central and South America Working Group (2016). Cancer in Central and South America. Lyon: International Agency for Research on Cancer. Available from: http://www-dep.iarc.fr/CSU_resources.htm accessed [date].”

Country's Summary Tables and Figures

COSTA RICA^{1,2}

(1995-2007)

¹ Country's incidence rates were estimated using data from the National population-based cancer registry of Costa Rica

² National mortality data obtained from the WHO mortality database:
http://www.who.int/healthinfo/statistics/mortality_rawdata/en/index.html

Registry Summary Tables and Figures

COSTA RICA, NATIONAL REGISTRY (1985-2007)

Registry Director*: Dr Maria Ethel Trejos

Registry Staff*: Rosa Ma. Vargas Alvarado, Tècn. Guillermo Torres Alvarado, Ma. Estebana Guevara Obando, Bernardo Moreira Moreira, Fernando Sancho Rojas, Henry Wasserman Taitelbaum

*Director and staff as notified at time of call for data in 2013. Current contact information for cancer registries in the region can be found at: http://www.iacr.com.fr/index.php?option=com_comprofiler&task=usersList&listid=5.

COSTA RICA (1985-1989)
Number of Cases in Major Diagnosis Groups
per Calendar Year

SITE	YEAR					TOTAL n (%)
	1985 n (%)	1986 n (%)	1987 n (%)	1988 n (%)	1989 n (%)	
MALES						
Lip, oral cavity, and pharynx (C00-C14)	56 (3.4)	71 (4.2)	62 (3.7)	65 (3.6)	57 (3.0)	311 (3.6)
Digestive organs (C15-C26)	578 (34.7)	559 (33.2)	536 (31.9)	571 (31.8)	640 (33.5)	2884 (33.0)
Respiratory organs (C30-C39)	131 (7.9)	141 (8.4)	122 (7.3)	143 (8.0)	177 (9.3)	714 (8.2)
Bone, cartilage, and skin (C40-C44)	315 (18.9)	314 (18.7)	331 (19.7)	408 (22.7)	407 (21.3)	1775 (20.3)
Breast (C50)	6 (0.4)	2 (0.1)	4 (0.2)	3 (0.2)	2 (0.1)	17 (0.2)
Male genitalia (C60-C63)	208 (12.5)	210 (12.5)	215 (12.8)	221 (12.3)	224 (11.7)	1078 (12.3)
Urinary organs (C64-C68)	68 (4.1)	76 (4.5)	60 (3.6)	69 (3.8)	72 (3.8)	345 (3.9)
Eye, brain, and thyroid (C69-C75)	51 (3.1)	61 (3.6)	63 (3.7)	71 (4.0)	72 (3.8)	318 (3.6)
Hematopoietic (C81-C96)	179 (10.8)	166 (9.9)	201 (12.0)	177 (9.9)	195 (10.2)	918 (10.5)
Other and unspecified	73 (4.4)	82 (4.9)	88 (5.2)	67 (3.7)	67 (3.5)	377 (4.3)
All sites	1665 (100.0)	1682 (100.0)	1682 (100.0)	1795 (100.0)	1913 (100.0)	8737 (100.0)
FEMALES						
Lip, oral cavity, and pharynx (C00-C14)	26 (1.6)	26 (1.6)	32 (1.8)	28 (1.6)	32 (1.6)	144 (1.6)
Digestive organs (C15-C26)	376 (22.4)	354 (21.4)	401 (22.0)	355 (20.0)	405 (20.7)	1891 (21.3)
Respiratory organs (C30-C39)	38 (2.3)	47 (2.8)	61 (3.3)	41 (2.3)	59 (3.0)	246 (2.8)
Bone, cartilage, and skin (C40-C44)	340 (20.3)	337 (20.4)	367 (20.2)	402 (22.6)	475 (24.3)	1921 (21.6)
Breast (C50)	224 (13.4)	239 (14.5)	240 (13.2)	266 (15.0)	297 (15.2)	1266 (14.3)
Female genitalia (C51-C58)	350 (20.9)	374 (22.7)	389 (21.4)	381 (21.5)	374 (19.1)	1868 (21.0)
Urinary organs (C64-C68)	34 (2.0)	25 (1.5)	25 (1.4)	31 (1.7)	33 (1.7)	148 (1.7)
Eye, brain, and thyroid (C69-C75)	86 (5.1)	61 (3.7)	86 (4.7)	73 (4.1)	93 (4.8)	399 (4.5)
Hematopoietic (C81-C96)	132 (7.9)	128 (7.8)	154 (8.5)	138 (7.8)	118 (6.0)	670 (7.5)
Other and unspecified	71 (4.2)	60 (3.6)	66 (3.6)	61 (3.4)	69 (3.5)	327 (3.7)
All sites	1677 (100.0)	1651 (100.0)	1821 (100.0)	1776 (100.0)	1955 (100.0)	8880 (100.0)
BOTH SEXES						
Lip, oral cavity, and pharynx (C00-C14)	82 (2.5)	97 (2.9)	94 (2.7)	93 (2.6)	89 (2.3)	455 (2.6)
Digestive organs (C15-C26)	954 (28.5)	913 (27.4)	937 (26.7)	926 (25.9)	1045 (27.0)	4775 (27.1)
Respiratory organs (C30-C39)	169 (5.1)	188 (5.6)	183 (5.2)	184 (5.2)	236 (6.1)	960 (5.4)
Bone, cartilage, and skin (C40-C44)	655 (19.6)	651 (19.5)	698 (19.9)	810 (22.7)	882 (22.8)	3696 (21.0)
Urinary organs (C64-C68)	102 (3.1)	101 (3.0)	85 (2.4)	100 (2.8)	105 (2.7)	493 (2.8)
Eye, brain, and thyroid (C69-C75)	137 (4.1)	122 (3.7)	149 (4.3)	144 (4.0)	165 (4.3)	717 (4.1)
Hematopoietic (C81-C96)	311 (9.3)	294 (8.8)	355 (10.1)	315 (8.8)	313 (8.1)	1588 (9.0)
Other and unspecified	144 (4.3)	142 (4.3)	154 (4.4)	128 (3.6)	136 (3.5)	704 (4.0)
All sites	3342 (100.0)	3333 (100.0)	3503 (100.0)	3571 (100.0)	3868 (100.0)	17617 (100.0)

COSTA RICA (1985-1989)
Age Standardized Incidence Rate (World Population) per 100,000
in Major Diagnosis Groups per Calendar Year

SITE	YEAR					TOTAL ASR (%)
	1985 ASR (%)	1986 ASR (%)	1987 ASR (%)	1988 ASR (%)	1989 ASR (%)	
MALES						
Lip, oral cavity, and pharynx (C00-C14)	6.3 (3.4)	8.2 (4.5)	6.4 (3.7)	6.5 (3.6)	5.6 (3.0)	6.6 (3.6)
Digestive organs (C15-C26)	68.2 (36.5)	63.0 (34.4)	58.3 (33.7)	60.4 (33.5)	64.7 (34.5)	62.9 (34.5)
Respiratory organs (C30-C39)	16.1 (8.6)	16.8 (9.2)	13.7 (7.9)	16.3 (9.0)	18.9 (10.1)	16.4 (9.0)
Bone, cartilage, and skin (C40-C44)	36.1 (19.3)	36.2 (19.8)	35.8 (20.7)	42.5 (23.6)	41.6 (22.2)	38.5 (21.2)
Breast (C50)	0.8 (0.4)	0.2 (0.1)	0.4 (0.2)	0.3 (0.2)	0.2 (0.1)	0.4 (0.2)
Male genitalia (C60-C63)	22.4 (12.0)	21.7 (11.9)	21.1 (12.2)	21.1 (11.7)	20.7 (11.0)	21.4 (11.7)
Urinary organs (C64-C68)	7.8 (4.2)	8.3 (4.5)	6.3 (3.7)	7.1 (4.0)	7.5 (4.0)	7.4 (4.1)
Eye, brain, and thyroid (C69-C75)	4.9 (2.6)	5.8 (3.2)	5.6 (3.2)	5.8 (3.2)	5.8 (3.1)	5.6 (3.1)
Hematopoietic (C81-C96)	16.5 (8.8)	14.8 (8.1)	16.9 (9.7)	14.7 (8.1)	16.5 (8.8)	15.9 (8.7)
Other and unspecified	8.1 (4.4)	9.0 (4.9)	9.3 (5.4)	6.1 (3.4)	6.5 (3.5)	7.8 (4.3)
All sites	187.0 (100.0)	183.0 (100.0)	173.1 (100.0)	180.2 (100.0)	187.4 (100.0)	182.2 (100.0)
FEMALES						
Lip, oral cavity, and pharynx (C00-C14)	2.5 (1.4)	2.7 (1.6)	2.9 (1.6)	2.8 (1.6)	3.0 (1.6)	2.8 (1.6)
Digestive organs (C15-C26)	41.8 (23.1)	38.1 (22.3)	41.2 (22.8)	34.8 (20.2)	38.6 (21.3)	38.9 (21.9)
Respiratory organs (C30-C39)	4.2 (2.3)	4.8 (2.8)	6.8 (3.7)	4.2 (2.4)	6.1 (3.4)	5.2 (2.9)
Bone, cartilage, and skin (C40-C44)	37.6 (20.8)	36.0 (21.0)	37.4 (20.8)	40.1 (23.2)	44.6 (24.6)	39.3 (22.1)
Breast (C50)	26.1 (14.4)	26.4 (15.5)	25.4 (14.1)	27.3 (15.8)	28.8 (15.9)	26.9 (15.1)
Female genitalia (C51-C58)	38.3 (21.2)	38.2 (22.4)	37.9 (21.0)	36.8 (21.3)	33.9 (18.6)	37.0 (20.8)
Urinary organs (C64-C68)	3.3 (1.8)	2.6 (1.5)	2.6 (1.5)	3.2 (1.9)	3.1 (1.7)	3.0 (1.7)
Eye, brain, and thyroid (C69-C75)	7.8 (4.3)	5.1 (3.0)	6.8 (3.8)	6.4 (3.7)	7.7 (4.2)	6.8 (3.8)
Hematopoietic (C81-C96)	12.4 (6.9)	11.6 (6.8)	13.2 (7.3)	11.7 (6.8)	9.8 (5.4)	11.7 (6.6)
Other and unspecified	7.6 (4.2)	6.1 (3.6)	6.8 (3.8)	5.9 (3.4)	6.4 (3.5)	6.5 (3.7)
All sites	181.2 (100.0)	170.9 (100.0)	180.3 (100.0)	172.4 (100.0)	181.7 (100.0)	177.3 (100.0)
BOTH SEXES						
Lip, oral cavity, and pharynx (C00-C14)	4.4 (2.4)	5.4 (3.1)	4.6 (2.6)	4.6 (2.6)	4.3 (2.3)	4.7 (2.6)
Digestive organs (C15-C26)	54.8 (29.8)	50.3 (28.5)	49.6 (28.1)	47.4 (27.0)	51.4 (28.0)	50.7 (28.3)
Respiratory organs (C30-C39)	10.1 (5.5)	10.7 (6.1)	10.2 (5.8)	10.1 (5.8)	12.3 (6.7)	10.7 (6.0)
Bone, cartilage, and skin (C40-C44)	36.9 (20.1)	36.3 (20.6)	36.7 (20.8)	41.3 (23.5)	43.3 (23.5)	39.0 (21.7)
Urinary organs (C64-C68)	5.6 (3.0)	5.4 (3.1)	4.5 (2.5)	5.1 (2.9)	5.2 (2.9)	5.2 (2.9)
Eye, brain, and thyroid (C69-C75)	6.3 (3.5)	5.4 (3.1)	6.2 (3.5)	6.1 (3.5)	6.7 (3.7)	6.2 (3.4)
Hematopoietic (C81-C96)	14.5 (7.9)	13.2 (7.5)	15.1 (8.5)	13.2 (7.5)	13.1 (7.1)	13.8 (7.7)
Other and unspecified	7.9 (4.3)	7.6 (4.3)	8.0 (4.6)	6.0 (3.4)	6.5 (3.5)	7.1 (4.0)
All sites	183.8 (100.0)	176.5 (100.0)	176.4 (100.0)	175.8 (100.0)	184.0 (100.0)	179.3 (100.0)

COSTA RICA (1985-1989)

Incidence per 100,000 by Age Group (years)

Males

SITE	ALL CASES	UNK AGE	0-4	5-9	10-14	15-19	20-24	25-29	30-34	35-39	40-44	45-49	50-54	55-59	60-64	65-69	70-74	75+	CRUDE RATE	ASR (W)	CUM. RATE (0-74)†	MV (%)	DCO (%)	Rank‡	ICD10
Lip, oral cavity, and pharynx (C00-14)	311	1	0.1	.	0.7	1.0	0.9	1.0	1.4	1.9	1.9	8.4	10.0	20.8	27.4	35.3	40.3	57.1	4.3	6.6	0.76	95	0	6	C00-14
Oesophagus (C15)	142	0	.	.	.	0.1	.	.	.	0.2	0.6	2.4	2.9	6.0	10.9	23.2	28.8	41.1	2.0	3.1	0.38	73	0	14	C15
Stomach (C16)	1869	4	.	.	.	0.4	1.2	3.4	10.5	16.6	35.5	71.1	112.8	112.8	163.4	254.6	316.6	425.6	26.0	41.3	4.94	81	0	1	C16
Colon (C18)	205	1	.	.	0.1	0.1	0.9	1.0	1.3	1.2	1.9	5.2	7.6	5.5	15.7	28.8	24.2	47.0	2.9	4.3	0.47	73	0		C18
Rectum (C19-20)	154	0	.	.	0.1	0.4	0.6	0.5	2.6	2.2	4.0	2.4	9.3	8.9	22.3	21.9	31.1	31.1	2.1	3.2	0.38	86	0		C19-20
Colorectal (C18-20)	359	1	.	.	0.3	0.1	1.3	1.6	1.8	3.8	4.1	9.2	10.0	14.8	24.6	51.1	46.1	78.1	5.0	7.5	0.85	79	0	4	C18-20
Anus (C21)	9	0	1.1	0.7	0.9	.	4.2	0.1	0.2	0.01	89	0	26	C21
Colon, rectum and anus (C18-21)	368	1	.	.	0.3	0.1	1.3	1.6	1.8	3.8	4.1	9.2	10.0	15.9	25.3	52.0	46.1	82.3	5.1	7.7	0.86	79	0		C18-21
Liver (C22)	181	1	.	0.2	0.1	0.7	0.9	0.7	1.8	2.6	4.1	3.6	3.8	6.6	13.7	14.9	28.8	30.2	2.5	3.6	0.42	49	0	10	C22
Gallbladder (C23-24)	75	0	0.1	.	.	0.5	.	1.6	1.9	5.5	8.2	12.1	16.1	12.6	1.0	1.7	0.23	49	0	20	C23-24
Pancreas (C25)	153	0	0.1	.	.	.	0.1	0.1	.	0.5	1.3	2.8	2.9	10.4	12.3	21.4	32.2	36.1	2.1	3.4	0.42	28	0	13	C25
Nose, sinuses (C30-31)	24	1	0.2	.	0.4	1.0	1.6	2.1	3.7	5.8	2.5	0.3	0.5	0.08	96	0	23	C30-31
Larynx (C32)	155	0	0.1	.	0.2	1.3	0.8	6.2	8.8	16.4	22.3	36.8	31.9	2.2	3.5	0.46	88	0	12	C32
Lung, trachea and bronchus (C33-34)	499	16	0.1	.	.	0.1	0.1	.	0.4	1.7	0.3	7.2	16.2	25.2	68.4	83.6	109.4	73.9	6.9	11.7	1.61	71	0	3	C33-34
Melanoma of skin (C43)	84	20	.	0.1	.	0.1	0.4	.	0.7	0.2	1.9	0.4	1.9	3.8	3.4	7.4	12.7	10.1	1.2	1.7	0.22	94	0	19	C43
Mesothelioma (C45)	7	1	0.1	.	.	.	0.4	1.0	.	.	0.9	.	0.8	0.1	0.1	0.01	100	0	27	C45
Kaposi sarcoma (C46)	26	10	0.4	0.4	0.4	0.2	0.6	5.8	2.5	0.4	0.4	0.06	92	0	24	C46
Breast (C50)	17	0	0.2	0.3	.	0.5	0.5	1.4	3.7	4.6	2.5	0.2	0.4	0.06	100	0	25	C50
Penis (C60)	59	0	.	.	.	0.1	0.1	0.1	0.7	0.2	0.3	1.2	0.5	2.7	2.1	7.4	11.5	17.6	0.8	1.2	0.13	95	0	22	C60
Prostate (C61)	880	72	0.1	0.2	.	2.8	7.6	20.3	40.3	110.6	190.0	338.3	12.2	18.4	2.03	83	0	2	C61
Testis (C62)	134	0	0.5	0.1	0.1	1.6	3.6	3.3	4.9	4.5	2.2	1.2	1.0	2.2	.	0.9	1.2	0.8	1.9	1.8	0.14	93	0	18	C62
Kidney (C64)	99	0	1.1	0.3	0.4	0.5	1.3	2.8	2.4	8.2	10.3	11.2	15.0	7.6	1.4	2.1	0.27	83	0	16	C64
Bladder (C67)	231	0	0.1	0.1	.	.	0.1	.	.	1.2	2.5	4.0	2.4	13.1	19.1	26.0	48.4	65.5	3.2	5.0	0.59	91	0	8	C67
Brain, CNS (C70-72)	202	7	1.9	2.4	1.5	1.1	1.3	0.7	1.8	3.6	5.1	6.0	7.2	9.3	8.9	6.5	9.2	4.2	2.8	3.5	0.34	84	0	11	C70-72
Thyroid (C73)	64	1	.	0.1	0.3	0.4	1.1	0.3	0.7	0.7	1.3	0.8	3.3	3.3	3.4	2.8	10.4	3.4	0.9	1.2	0.15	92	0	21	C73
Thyroid disease (C81)	169	12	1.1	2.6	1.8	1.8	1.2	1.3	2.3	2.6	1.3	2.8	3.8	1.6	6.2	6.5	9.2	7.6	2.4	2.7	0.25	93	0	15	C81
Non-Hodgkin lymphoma (C82-85,C96)	250	13	1.9	1.5	1.1	1.4	1.2	0.6	2.5	2.6	4.8	4.8	8.6	4.9	17.8	20.4	20.7	24.3	3.5	4.7	0.50	89	0	9	C82-85,C96
Multiple myeloma (C88-C90)	88	5	.	.	0.1	0.5	.	2.0	3.3	3.3	8.2	14.9	15.0	17.6	1.2	2.0	0.25	61	0	17	C88-C90
Lymphoid leukaemia (C91)	242	1	6.7	3.5	3.5	3.3	1.4	1.4	0.5	1.0	0.6	1.6	4.3	3.3	4.8	7.4	6.9	19.3	3.4	3.5	0.25	43	0		C91
Myeloid leukaemia (C92-94)	143	3	1.4	0.8	0.5	1.0	1.4	1.0	1.3	1.2	2.5	3.2	4.3	6.6	4.8	5.6	11.5	15.1	2.0	2.5	0.24	55	0		C92-94
Leukaemia unspecified (C95)	26	1	0.4	.	0.3	0.3	0.1	0.1	.	.	0.6	0.4	1.9	1.1	1.4	0.9	2.3	0.8	0.4	0.5	0.05	69	0		C95
Leukaemia (C91-95)	411	5	8.5	4.3	4.3	4.5	3.0	2.6	1.8	2.2	3.8	5.2	10.5	10.9	10.9	13.9	20.7	35.3	5.7	6.5	0.54	48	0	7	C91-95
Other and unspecified (O&U)	333	5	0.2	.	0.3	0.3	0.4	1.3	1.1	1.4	1.6	6.4	17.6	19.2	30.1	38.1	47.2	66.3	4.6	7.2	0.84	69	0	5	O&U
All sites but C44 (ALLbC44)	7078	179	18.8	12.8	12.6	14.0	18.4	18.0	27.5	46.2	59.8	116.5	204.6	328.5	524.5	811.3	1101.9	1417.0	98.5	146.6	17.01	78	0		ALLbC44
All sites (ALL)	8737	1091	19.0	12.8	12.7	14.0	18.7	19.0	29.5	50.5	68.1	131.7	229.4	372.2	605.9	902.4	1227.4	1571.4	121.6	182.2	21.22	82	0		ALL

UNK, Unknown; ASR (W), Age Standardized Rate (World Population); CUM., Cumulative; MV, Microscopic Verification; DCO, Death Certificate Only

†Percent

‡Rank based on highest ASR excluding: All sites but C44 and All sites

COSTA RICA (1985-1989)

Incidence per 100,000 by Age Group (years)

Females

SITE	ALL CASES	UNK AGE	0-4	5-9	10-14	15-19	20-24	25-29	30-34	35-39	40-44	45-49	50-54	55-59	60-64	65-69	70-74	75+	CRUDE RATE	ASR (W)	CUM. RATE (0-74)†	MV (%)	DCO (%)	Rank‡	ICD10
Lip, oral cavity, and pharynx (C00-14)	144	2	0.3	.	0.7	0.7	0.6	0.6	1.3	1.2	1.6	2.0	3.3	6.5	10.8	10.8	19.9	26.1	2.1	2.8	0.31	90	0	13	C00-14
Oesophagus (C15)	62	0	0.2	.	0.6	0.4	1.4	4.3	6.1	6.3	14.4	13.8	0.9	1.3	0.17	81	0	20	C15
Stomach (C16)	887	2	0.1	.	0.1	0.1	0.6	1.5	3.4	7.1	9.3	19.1	25.3	42.3	61.7	99.9	132.9	223.6	12.8	18.1	2.02	76	0	3	C16
Colon (C18)	253	0	.	.	0.1	.	0.3	0.8	0.8	1.5	5.5	5.6	8.0	10.3	19.7	23.4	38.8	59.9	3.7	5.2	0.57	74	0		C18
Rectum (C19-20)	154	2	.	.	0.1	0.4	0.8	0.6	2.0	1.6	4.0	4.0	4.7	10.3	8.8	13.5	22.2	30.7	2.2	3.1	0.35	86	0		C19-20
Colorectal (C18-20)	407	2	.	.	0.1	0.1	0.7	1.5	1.3	3.4	7.1	9.5	12.7	20.6	28.5	36.9	60.9	90.7	5.9	8.3	0.92	79	0	4	C18-20
Anus (C21)	15	0	0.2	.	.	.	0.3	.	0.5	1.6	0.7	1.8	1.1	3.8	0.2	0.3	0.03	100	0	25	C21
Colon, rectum and anus (C18-21)	422	2	.	.	0.1	0.1	0.7	1.7	1.3	3.4	7.4	9.5	13.1	22.2	29.1	38.7	62.0	94.5	6.1	8.6	0.95	79	0		C18-21
Liver (C22)	118	0	0.3	0.1	0.3	.	0.4	0.5	1.1	1.0	0.3	2.0	2.8	8.1	8.8	9.9	16.6	23.1	1.7	2.3	0.26	47	0	15	C22
Gallbladder (C23-24)	212	0	0.5	1.3	1.3	4.0	5.6	16.8	21.7	27.0	33.2	46.9	3.1	4.6	0.55	63	0	8	C23-24
Pancreas (C25)	118	0	0.4	0.2	0.3	0.8	3.3	4.9	12.9	12.6	17.7	36.1	1.7	2.4	0.27	24	0	14	C25
Nose, sinuses (C30-31)	17	0	0.2	0.3	0.3	0.4	0.5	1.1	.	0.9	3.3	5.4	0.2	0.3	0.03	94	0	24	C30-31
Larynx (C32)	27	0	.	.	.	0.1	.	.	0.7	.	.	0.4	.	0.5	3.4	4.5	2.2	6.9	0.4	0.6	0.06	81	0	23	C32
Lung, trachea and bronchus (C33-34)	196	8	0.2	0.4	1.2	2.2	2.2	2.4	3.3	13.0	13.6	31.5	36.6	36.9	2.8	4.2	0.54	63	0	9	C33-34
Melanoma of skin (C43)	74	30	.	.	0.1	.	.	0.4	0.7	1.0	1.0	3.2	3.3	1.6	2.7	3.6	4.4	3.8	1.1	1.6	0.18	91	0	19	C43
Mesothelioma (C45)	4	0	0.3	.	.	0.5	0.7	.	1.1	.	0.1	0.1	0.01	75	0	27	C45
Kaposi sarcoma (C46)	6	3	0.9	.	1.5	0.1	0.1	0.01	100	0	26	C46
Breast (C50)	1266	108	.	.	.	0.4	2.5	9.1	26.0	46.9	46.9	56.4	56.3	74.2	93.6	98.1	97.5	80.7	18.3	26.9	3.07	94	0	1	C50
Cervix uteri (C53)	1275	4	.	.	.	2.5	12.4	25.5	34.1	42.1	42.1	47.7	63.8	76.9	69.1	75.6	76.4	88.4	18.4	24.8	2.64	92	0	2	C53
Corpus uteri (C54)	180	1	0.2	0.2	2.7	4.5	7.9	7.9	8.9	10.8	21.0	23.4	19.9	13.8	2.6	4.1	0.50	91	0	10	C54
Ovary (C56)	275	0	.	0.1	1.6	1.9	2.1	2.3	2.1	2.7	6.7	9.5	9.4	14.1	19.0	21.6	22.2	26.9	4.0	5.4	0.58	80	0	7	C56
Kidney (C64)	77	0	1.2	0.4	0.4	.	1.6	1.6	6.1	3.3	7.5	6.3	6.6	6.9	1.1	1.6	0.17	83	0	18	C64
Bladder (C67)	61	0	.	0.1	.	0.1	.	.	0.7	0.3	1.2	1.2	2.3	3.3	2.0	9.0	4.4	18.4	0.9	1.2	0.12	77	0	22	C67
Brain, CNS (C70-72)	126	6	1.4	1.4	1.0	0.9	0.8	1.1	3.4	1.7	1.6	2.4	3.3	6.0	2.7	4.5	4.4	1.5	1.8	2.0	0.19	75	0	16	C70-72
Thyroid (C73)	223	0	.	.	0.1	1.0	2.4	3.7	5.1	5.6	8.0	7.2	9.8	9.8	6.1	8.1	13.3	9.2	3.2	4.0	0.40	91	0	11	C73
Hodgkin disease (C81)	81	14	0.4	0.4	1.1	1.3	1.1	0.9	0.9	0.2	1.0	.	2.3	1.6	1.4	2.7	1.1	4.6	1.2	1.2	0.10	95	0	21	C81
Non-Hodgkin lymphoma (C82-85,C96)	171	13	1.2	0.7	0.3	0.7	.	1.4	1.1	1.7	1.3	3.2	5.2	8.7	12.2	14.4	15.5	19.2	2.5	3.3	0.37	88	0	12	C82-85,C96
Multiple myeloma (C88-C90)	83	3	0.2	0.5	0.3	0.8	3.8	3.3	7.5	8.1	17.7	18.4	1.2	1.8	0.22	58	0	17	C88-C90
Lymphoid leukaemia (C91)	158	3	5.1	2.4	2.1	1.7	1.0	0.8	1.1	1.2	0.6	1.2	1.9	1.6	4.7	5.4	3.3	6.1	2.3	2.3	0.17	37	0		C91
Myeloid leukaemia (C92-94)	142	2	1.7	0.1	1.0	1.2	1.7	2.0	1.1	2.5	1.6	2.4	4.2	3.8	6.1	9.0	4.4	13.1	2.0	2.4	0.22	54	0		C92-94
Leukaemia unspecified (C95)	35	0	0.4	.	0.1	0.4	0.1	0.3	0.2	0.7	0.6	.	0.5	.	2.0	4.5	2.2	5.4	0.5	0.6	0.06	54	0		C95
Leukaemia (C91-95)	335	5	7.2	2.5	3.2	3.3	2.8	3.1	2.5	4.4	2.9	3.6	6.6	5.4	12.9	18.9	10.0	24.6	4.8	5.4	0.45	46	0	6	C91-95
Other and unspecified (O&U)	296	2	0.5	0.2	0.1	.	0.3	0.3	2.8	1.7	2.6	6.4	8.0	15.2	25.1	41.4	42.1	53.8	4.3	6.2	0.74	69	1	5	O&U
All sites but C44 (ALLbC44)	7072	206	16.1	7.2	10.3	12.1	16.7	34.7	64.7	102.1	148.9	196.7	261.2	369.5	465.0	600.5	705.7	926.7	102.0	140.7	15.51	81	0		ALLbC44
All sites (ALL)	8880	1377	16.1	7.2	10.6	12.3	17.5	35.9	67.4	105.1	159.5	211.4	282.8	394.4	508.4	684.2	803.2	1070.4	128.1	177.3	19.62	84	0		ALL

UNK, Unknown; ASR (W), Age Standardized Rate (World Population); CUM., Cumulative; MV, Microscopic Verification; DCO, Death Certificate Only

†Percent

‡Rank based on highest ASR excluding: All sites but C44 and All sites

COSTA RICA (1985-1989)
Number of Deaths in Major Diagnosis Groups
per Calendar Year

SITE	YEAR					TOTAL n (%)
	1985 n (%)	1986 n (%)	1987 n (%)	1988 n (%)	1989 n (%)	
MALES						
Lip, oral cavity, and pharynx (C00-C14)	20 (1.8)	38 (3.4)	34 (2.8)	25 (2.0)	25 (1.9)	142 (2.3)
Digestive organs (C15-C26)	515 (45.4)	438 (38.9)	484 (40.5)	559 (43.8)	591 (44.3)	2587 (42.7)
Respiratory organs (C30-C39)	133 (11.7)	126 (11.2)	141 (11.8)	166 (13.0)	159 (11.9)	725 (12.0)
Bone, cartilage, and skin (C40-C44)	3 (0.3)	10 (0.9)	2 (0.2)	8 (0.6)	6 (0.4)	29 (0.5)
Male genitalia (C60-C63)	96 (8.5)	98 (8.7)	126 (10.6)	122 (9.6)	137 (10.3)	579 (9.6)
Urinary organs (C64-C68)	17 (1.5)	17 (1.5)	16 (1.3)	20 (1.6)	17 (1.3)	87 (1.4)
Hematopoietic (C81-C96)	59 (5.2)	60 (5.3)	76 (6.4)	61 (4.8)	76 (5.7)	332 (5.5)
Other and unspecified	291 (25.7)	338 (30.0)	315 (26.4)	314 (24.6)	323 (24.2)	1581 (26.1)
All sites	1134 (100.0)	1125 (100.0)	1194 (100.0)	1275 (100.0)	1334 (100.0)	6062 (100.0)
FEMALES						
Lip, oral cavity, and pharynx (C00-C14)	15 (1.6)	8 (0.8)	11 (1.0)	13 (1.2)	10 (1.0)	57 (1.1)
Digestive organs (C15-C26)	319 (33.3)	322 (32.6)	302 (28.8)	336 (31.9)	334 (32.6)	1613 (31.8)
Respiratory organs (C30-C39)	52 (5.4)	57 (5.8)	63 (6.0)	54 (5.1)	76 (7.4)	302 (6.0)
Bone, cartilage, and skin (C40-C44)	3 (0.3)	6 (0.6)	1 (0.1)	7 (0.7)	2 (0.2)	19 (0.4)
Breast (C50)	111 (11.6)	95 (9.6)	121 (11.5)	128 (12.2)	116 (11.3)	571 (11.3)
Female genitalia (C51-C58)	123 (12.8)	159 (16.1)	150 (14.3)	138 (13.1)	133 (13.0)	703 (13.9)
Urinary organs (C64-C68)	8 (0.8)	6 (0.6)	6 (0.6)	6 (0.6)	8 (0.8)	34 (0.7)
Hematopoietic (C81-C96)	50 (5.2)	42 (4.3)	58 (5.5)	60 (5.7)	54 (5.3)	264 (5.2)
Other and unspecified	302 (31.5)	327 (33.1)	368 (35.1)	348 (33.0)	318 (31.1)	1663 (32.8)
All sites	959 (100.0)	987 (100.0)	1049 (100.0)	1053 (100.0)	1024 (100.0)	5072 (100.0)
BOTH SEXES						
Lip, oral cavity, and pharynx (C00-C14)	35 (1.7)	46 (2.2)	45 (2.0)	38 (1.6)	35 (1.5)	199 (1.8)
Digestive organs (C15-C26)	834 (39.8)	760 (36.0)	786 (35.0)	895 (38.4)	925 (39.2)	4200 (37.7)
Respiratory organs (C30-C39)	185 (8.8)	183 (8.7)	204 (9.1)	220 (9.5)	235 (10.0)	1027 (9.2)
Bone, cartilage, and skin (C40-C44)	6 (0.3)	16 (0.8)	3 (0.1)	15 (0.6)	8 (0.3)	48 (0.4)
Urinary organs (C64-C68)	25 (1.2)	23 (1.1)	22 (1.0)	26 (1.1)	25 (1.1)	121 (1.1)
Hematopoietic (C81-C96)	109 (5.2)	102 (4.8)	134 (6.0)	121 (5.2)	130 (5.5)	596 (5.4)
Other and unspecified	593 (28.3)	665 (31.5)	683 (30.5)	662 (28.4)	641 (27.2)	3244 (29.1)
All sites	2093 (100.0)	2112 (100.0)	2243 (100.0)	2328 (100.0)	2358 (100.0)	11134 (100.0)

COSTA RICA (1985-1989)
Age Standardized Mortality Rate (World Population) per 100,000
in Major Diagnosis Groups per Calendar Year

SITE	YEAR					TOTAL ASMR (%)
	1985 ASMR (%)	1986 ASMR (%)	1987 ASMR (%)	1988 ASMR (%)	1989 ASMR (%)	
MALES						
Lip, oral cavity, and pharynx (C00-C14)	2.1 (1.8)	4.1 (3.6)	3.5 (3.0)	2.4 (2.0)	2.3 (1.9)	2.9 (2.4)
Digestive organs (C15-C26)	54.5 (46.4)	44.9 (39.4)	48.2 (41.3)	54.9 (45.8)	56.2 (45.6)	51.8 (43.8)
Respiratory organs (C30-C39)	14.4 (12.2)	13.7 (12.0)	14.9 (12.8)	16.4 (13.7)	15.8 (12.8)	15.0 (12.7)
Bone, cartilage, and skin (C40-C44)	0.3 (0.3)	1.0 (0.9)	0.2 (0.2)	0.8 (0.7)	0.5 (0.4)	0.6 (0.5)
Male genitalia (C60-C63)	9.5 (8.1)	9.1 (8.0)	12.1 (10.4)	10.7 (8.9)	11.4 (9.3)	10.6 (9.0)
Urinary organs (C64-C68)	1.7 (1.4)	1.7 (1.5)	1.5 (1.3)	1.8 (1.5)	1.5 (1.2)	1.6 (1.4)
Hematopoietic (C81-C96)	5.0 (4.3)	5.1 (4.4)	5.9 (5.0)	4.5 (3.7)	6.1 (5.0)	5.3 (4.5)
Other and unspecified	29.9 (25.5)	34.5 (30.2)	30.3 (26.0)	28.4 (23.7)	29.4 (23.8)	30.4 (25.7)
All sites	117.4 (100.0)	114.1 (100.0)	116.6 (100.0)	120.0 (100.0)	123.3 (100.0)	118.3 (100.0)
FEMALES						
Lip, oral cavity, and pharynx (C00-C14)	1.6 (1.7)	0.8 (0.8)	1.0 (1.0)	1.0 (1.1)	0.8 (0.9)	1.0 (1.1)
Digestive organs (C15-C26)	31.6 (32.4)	31.6 (32.3)	28.3 (28.8)	30.0 (31.2)	28.7 (31.6)	30.0 (31.2)
Respiratory organs (C30-C39)	5.4 (5.5)	5.5 (5.6)	6.6 (6.7)	4.9 (5.1)	7.2 (7.9)	5.9 (6.2)
Bone, cartilage, and skin (C40-C44)	0.3 (0.3)	0.6 (0.6)	0.1 (0.1)	0.6 (0.6)	0.1 (0.1)	0.4 (0.4)
Breast (C50)	12.2 (12.6)	10.1 (10.3)	11.9 (12.1)	12.8 (13.3)	11.0 (12.1)	11.6 (12.1)
Female genitalia (C51-C58)	13.1 (13.5)	16.5 (16.9)	14.4 (14.6)	12.9 (13.4)	12.4 (13.6)	13.8 (14.4)
Urinary organs (C64-C68)	0.8 (0.8)	0.5 (0.6)	0.4 (0.4)	0.5 (0.6)	0.8 (0.9)	0.6 (0.6)
Hematopoietic (C81-C96)	4.3 (4.4)	3.3 (3.4)	4.5 (4.6)	4.8 (5.0)	4.3 (4.7)	4.2 (4.4)
Other and unspecified	30.7 (31.5)	32.5 (33.2)	34.1 (34.6)	32.1 (33.4)	28.4 (31.2)	31.5 (32.8)
All sites	97.4 (100.0)	97.9 (100.0)	98.5 (100.0)	96.2 (100.0)	91.0 (100.0)	96.0 (100.0)
BOTH SEXES						
Lip, oral cavity, and pharynx (C00-C14)	1.9 (1.7)	2.5 (2.3)	2.2 (2.1)	1.7 (1.6)	1.5 (1.5)	2.0 (1.8)
Digestive organs (C15-C26)	42.9 (40.1)	38.2 (36.1)	38.2 (35.6)	42.3 (39.2)	42.2 (39.6)	40.7 (38.1)
Respiratory organs (C30-C39)	9.8 (9.1)	9.6 (9.1)	10.7 (9.9)	10.5 (9.8)	11.4 (10.7)	10.4 (9.7)
Bone, cartilage, and skin (C40-C44)	0.3 (0.3)	0.8 (0.8)	0.2 (0.1)	0.7 (0.7)	0.3 (0.3)	0.5 (0.4)
Urinary organs (C64-C68)	1.2 (1.2)	1.1 (1.1)	0.9 (0.9)	1.1 (1.1)	1.1 (1.0)	1.1 (1.0)
Hematopoietic (C81-C96)	4.7 (4.4)	4.2 (3.9)	5.2 (4.8)	4.6 (4.3)	5.2 (4.9)	4.8 (4.5)
Other and unspecified	30.3 (28.3)	33.5 (31.6)	32.3 (30.1)	30.3 (28.2)	28.9 (27.1)	31.0 (29.0)
All sites	107.1 (100.0)	105.8 (100.0)	107.3 (100.0)	107.7 (100.0)	106.7 (100.0)	106.8 (100.0)

COSTA RICA (1985-1989)
Mortality per 100,000 by Age Group (years)
Males

SITE	ALL DEATHS	UNK AGE	0-4	5-9	10-14	15-19	20-24	25-29	30-34	35-39	40-44	45-49	50-54	55-59	60-64	65-69	70-74	75+	CRUDE RATE	ASMR (W)	CUM. RATE (0-74)†	Rank‡	ICD-10
Lip, oral cavity, & pharynx (C00-14)	142	0	0.0	0.2	0.0	0.3	0.1	0.6	0.0	0.2	0.3	1.6	5.2	9.8	12.1	14.9	22.6	31.1	2.0	2.9	0.3	8	C00-14
Oesophagus (C15)	161	1	0.0	0.0	0.0	0.0	0.0	0.0	0.0	0.0	0.6	1.2	3.3	8.1	9.4	23.6	53.2	53.2	2.2	3.2	0.4	7	C15
Stomach (C16)	1820	2	0.0	0.0	0.0	0.0	0.3	0.6	2.5	5.9	10.9	26.8	56.8	82.5	135.6	195.9	299.1	528.2	25.2	36.9	4.1	1	C16
Colon (C18)	177	0	0.1	0.0	0.0	0.3	0.5	0.7	0.9	0.7	1.6	2.4	4.7	3.8	10.8	13.4	26.6	56.5	2.4	3.4	0.3		C18
Rectum (C19-C20)	0	0	0.0	0.0	0.0		C19-C20
Colorectal (C18-20)	0	0	0.0	0.0	0.0	20	C18-20
Anus (C21)	0	0	0.0	0.0	0.0	20	C21
Colon, rectum and anus (C18-21)	281	0	0.1	0.0	0.0	0.3	0.9	1.0	1.8	1.7	2.9	5.1	6.6	10.3	17.5	19.7	36.4	85.2	3.9	5.3	0.5		C18-21
Liver (C22)	325	1	0.2	0.0	0.1	0.8	0.9	1.9	2.1	2.4	3.5	6.3	10.9	16.8	20.2	29.9	44.3	64.7	4.5	6.3	0.7	5	C22
Gallbladder (C23-24)	0	0	0.0	0.0	0.0	20	C23-24
Pancreas (C25)	0	0	0.0	0.0	0.0	20	C25
Nose, sinuses (C30-31)	0	0	0.0	0.0	0.0	20	C30-31
Larynx (C32)	124	0	0.0	0.0	0.0	0.3	0.0	0.0	0.0	0.0	1.0	1.2	3.3	4.9	9.4	18.9	19.7	34.4	1.7	2.5	0.3	9	C32
Lung (C33-34)	601	1	0.0	0.0	0.1	0.0	0.4	0.0	0.4	1.9	1.3	7.1	15.6	28.8	61.4	77.1	100.4	153.1	8.3	12.5	1.5	3	C33-34
Melanoma of skin (C43)	29	0	0.0	0.0	0.0	0.0	0.0	0.0	0.5	0.2	1.0	0.0	0.5	2.2	3.4	2.4	3.9	4.1	0.4	0.6	0.1	11	C43
Mesothelioma (C45)	0	0	0.0	0.0	0.0	20	C45
Kaposi sarcoma (C46)	0	0	0.0	0.0	0.0	20	C46
Breast (C50)	0	0	0.0	0.0	0.0	20	C50
Penis (C60)	0	0	0.0	0.0	0.0	20	C60
Prostate (C61)	579	2	0.0	0.0	0.0	0.0	0.0	0.0	0.0	0.2	0.0	0.0	3.3	11.9	20.9	36.2	93.5	307.1	8.0	10.6	0.8	4	C61
Testis (C62)	0	0	0.0	0.0	0.0	20	C62
Kidney (C64)	0	0	0.0	0.0	0.0	20	C64
Bladder (C67)	87	0	0.0	0.0	0.0	0.0	0.0	0.0	0.2	0.0	0.0	0.4	1.4	2.2	2.0	7.1	17.7	39.3	1.2	1.6	0.2	10	C67
Brain, CNS (C70-72)	0	0	0.0	0.0	0.0	20	C70-72
Thyroid (C73)	0	0	0.0	0.0	0.0	20	C73
Hodgkin disease (C81)	0	0	0.0	0.0	0.0	20	C81
Non-Hodgkin lymphoma (C82-85,C96)	0	0	0.0	0.0	0.0	20	C82-85,C96
Multiple myeloma (C88+C90)	0	0	0.0	0.0	0.0	20	C88+C90
Lymphoid leukaemia (C91)	0	0	0.0	0.0	0.0		C91
Myeloid leukaemia (C92-94)	0	0	0.0	0.0	0.0		C92-94
Leukaemia unspecified (C95)	0	0	0.0	0.0	0.0		C95
Leukaemia (C91-95)	332	0	3.0	2.7	2.6	4.7	3.7	2.9	2.0	1.9	3.9	4.3	6.6	9.2	10.1	13.4	28.5	36.0	4.6	5.3	0.5	6	C91-95
Other and unspecified (O&U)	1581	11	3.8	3.5	2.1	4.3	5.4	6.6	6.0	9.7	13.2	30.0	56.3	71.1	102.6	139.3	186.9	333.3	21.9	30.4	3.2	2	O&U
All sites (ALL)	6062	18	7.2	6.3	5.0	10.6	11.6	13.6	15.5	24.1	38.6	84.1	169.9	257.9	404.9	578.3	876.7	1669.7	83.9	118.3	12.6		ALL

UNK, Unknown; ASMR (W), Age Standardized Mortality Rate (World Population); CUM., Cumulative

†Percent

‡Rank based on highest ASMR excluding: All sites but lung and All sites

COSTA RICA (1985-1989)
Mortality per 100,000 by Age Group (years)
Females

SITE	ALL DEATHS	UNK AGE	0-4	5-9	10-14	15-19	20-24	25-29	30-34	35-39	40-44	45-49	50-54	55-59	60-64	65-69	70-74	75+	CRUDE RATE	ASMR (W)	CUM. RATE (0-74)†	Rank‡	ICD-10
Lip, oral cavity, & pharynx (C00-14)	57	0	0.1	0.1	0.1	0.3	0.0	0.0	0.8	0.0	0.6	0.4	0.9	1.6	4.7	5.6	6.9	13.0	0.8	1.0	0.1	9	C00-14
Oesophagus (C15)	76	0	0.0	0.0	0.0	0.0	0.0	0.0	0.4	0.2	0.3	0.8	1.9	3.2	6.1	2.4	15.8	23.2	1.1	1.4	0.2	8	C15
Stomach (C16)	1007	2	0.1	0.0	0.0	0.6	0.8	1.7	4.4	5.5	15.2	21.3	21.3	40.9	67.4	83.5	115.4	338.3	14.4	18.8	1.8	2	C16
Colon (C18)	218	0	0.0	0.0	0.1	0.3	0.1	1.1	0.6	0.5	3.6	2.3	4.6	7.0	10.8	14.3	28.6	71.7	3.1	3.9	0.4		C18
Rectum (C19-C20)	0	0	0.0	0.0	0.0		C19-C20
Colorectal (C18-20)	0	0	0.0	0.0	0.0	21	C18-20
Anus (C21)	0	0	0.0	0.0	0.0	21	C21
Colon, rectum and anus (C18-21)	308	0	0.0	0.0	0.1	0.4	0.7	1.4	0.9	1.5	3.9	5.1	6.9	14.0	16.2	16.7	36.5	94.9	4.4	5.6	0.5		C18-21
Liver (C22)	222	0	0.2	0.0	0.1	0.0	0.0	0.9	1.3	1.5	1.3	3.5	3.7	12.4	18.2	18.3	36.5	50.0	3.2	4.3	0.5	6	C22
Gallbladder (C23-24)	0	0	0.0	0.0	0.0	21	C23-24
Pancreas (C25)	0	0	0.0	0.0	0.0	21	C25
Nose, sinuses (C30-31)	0	0	0.0	0.0	0.0	21	C30-31
Larynx (C32)	26	0	0.0	0.0	0.0	0.0	0.0	0.0	0.0	0.0	0.0	0.0	0.9	0.5	2.7	2.4	3.0	9.4	0.4	0.5	0.0	12	C32
Lung (C33-34)	276	0	0.0	0.0	0.0	0.0	0.2	0.8	1.5	1.6	1.6	3.1	5.1	14.5	17.5	40.5	47.3	64.5	4.0	5.4	0.7	5	C33-34
Melanoma of skin (C43)	19	1	0.0	0.0	0.0	0.0	0.2	0.0	0.0	0.0	1.0	0.4	0.0	1.6	0.7	1.6	0.0	5.1	0.3	0.4	0.0	13	C43
Mesothelioma (C45)	0	0	0.0	0.0	0.0	21	C45
Kaposi sarcoma (C46)	0	0	0.0	0.0	0.0	21	C46
Breast (C50)	571	0	0.0	0.0	0.0	0.0	0.5	2.4	8.1	15.8	20.3	20.3	31.5	43.6	41.8	37.4	56.2	76.8	8.2	11.6	1.3	4	C50
Cervix uteri (C53)	660	0	0.0	0.0	0.0	0.4	3.5	4.7	11.8	15.5	23.0	23.0	31.0	33.3	43.8	46.9	67.1	96.4	9.5	12.9	1.4	3	C53
Corpus uteri (C54)	43	0	0.0	0.0	0.0	0.0	0.0	0.0	0.0	0.0	0.0	0.0	2.8	2.7	4.7	3.2	6.9	10.1	0.6	0.9	0.1	10	C54
Ovary (C56)	0	0	0.0	0.0	0.0	21	C56
Kidney (C64)	0	0	0.0	0.0	0.0	21	C64
Bladder (C67)	34	0	0.1	0.0	0.0	0.0	0.0	0.0	0.0	0.0	0.3	0.0	0.9	1.1	2.0	4.0	2.0	13.0	0.5	0.6	0.1	11	C67
Brain, CNS (C70-72)	0	0	0.0	0.0	0.0	21	C70-72
Thyroid (C73)	0	0	0.0	0.0	0.0	21	C73
Hodgkin disease (C81)	0	0	0.0	0.0	0.0	21	C81
Non-Hodgkin lymphoma (C82-85,C96)	0	0	0.0	0.0	0.0	21	C82-85,C96
Multiple myeloma (C88+C90)	0	0	0.0	0.0	0.0	21	C88+C90
Lymphoid leukaemia (C91)	0	0	0.0	0.0	0.0		C91
Myeloid leukaemia (C92-94)	0	0	0.0	0.0	0.0		C92-94
Leukaemia unspecified (C95)	0	0	0.0	0.0	0.0		C95
Leukaemia (C91-95)	264	0	2.5	1.0	2.4	4.3	3.2	2.0	3.0	2.9	3.2	3.9	3.2	5.9	10.8	15.1	10.8	26.8	3.8	4.2	0.4	7	C91-95
Other and unspecified (O&U)	1663	1	3.0	2.3	1.4	2.9	2.3	4.1	9.4	9.3	18.1	23.0	49.5	79.1	122.0	140.7	211.0	370.9	23.8	31.5	3.4	1	O&U
All sites (ALL)	5072	4	6.0	3.4	4.2	7.9	7.5	13.0	25.2	39.5	64.6	97.1	151.9	246.3	345.2	405.5	597.6	1159.9	72.7	96.0	10.1		ALL

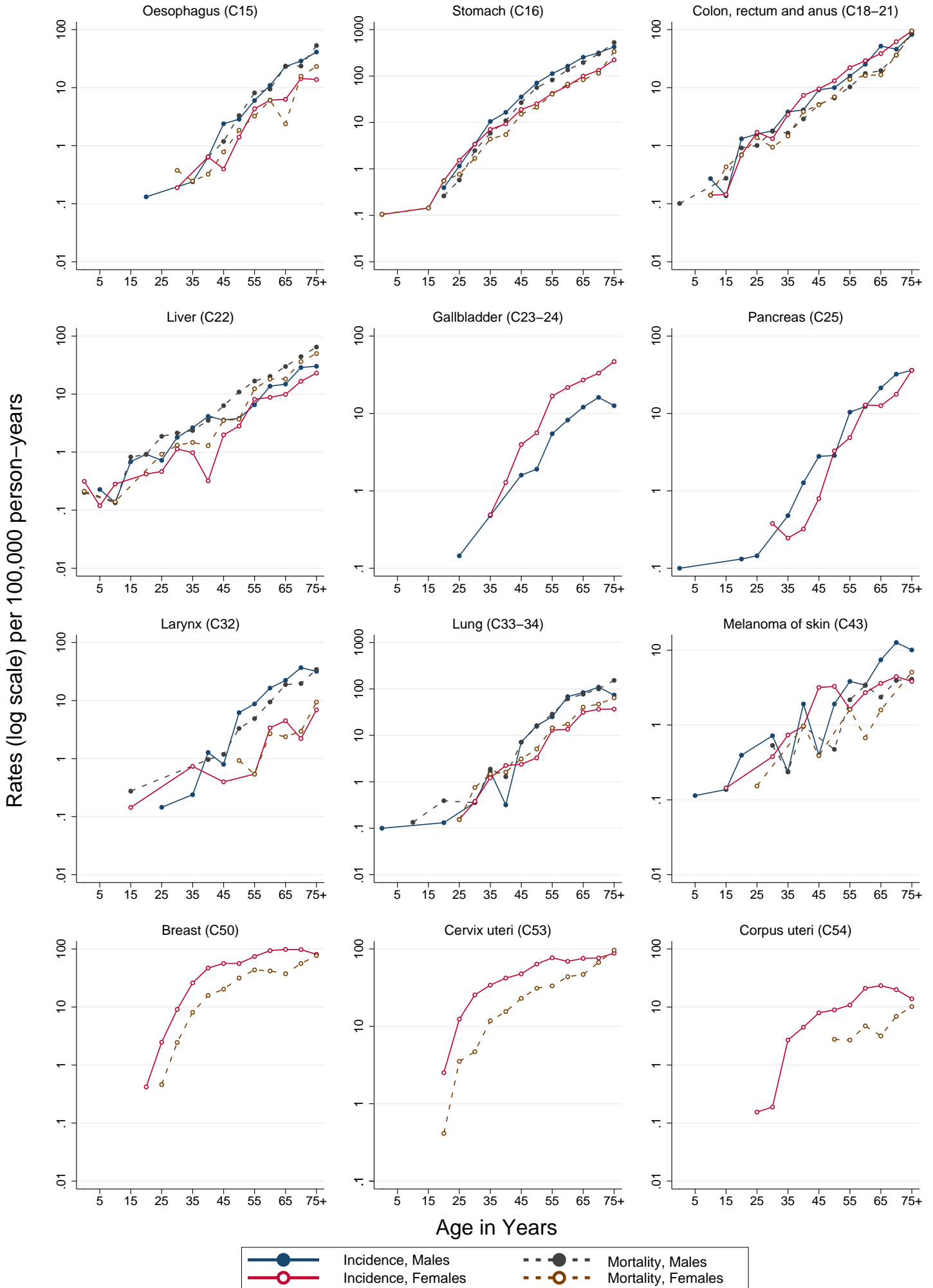
UNK, Unknown; ASMR (W), Age Standardized Mortality Rate (World Population); CUM., Cumulative

†Percent

‡Rank based on highest ASMR excluding: All sites but lung and All sites

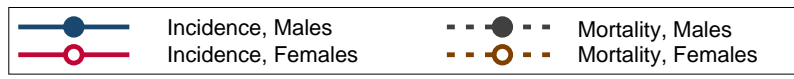
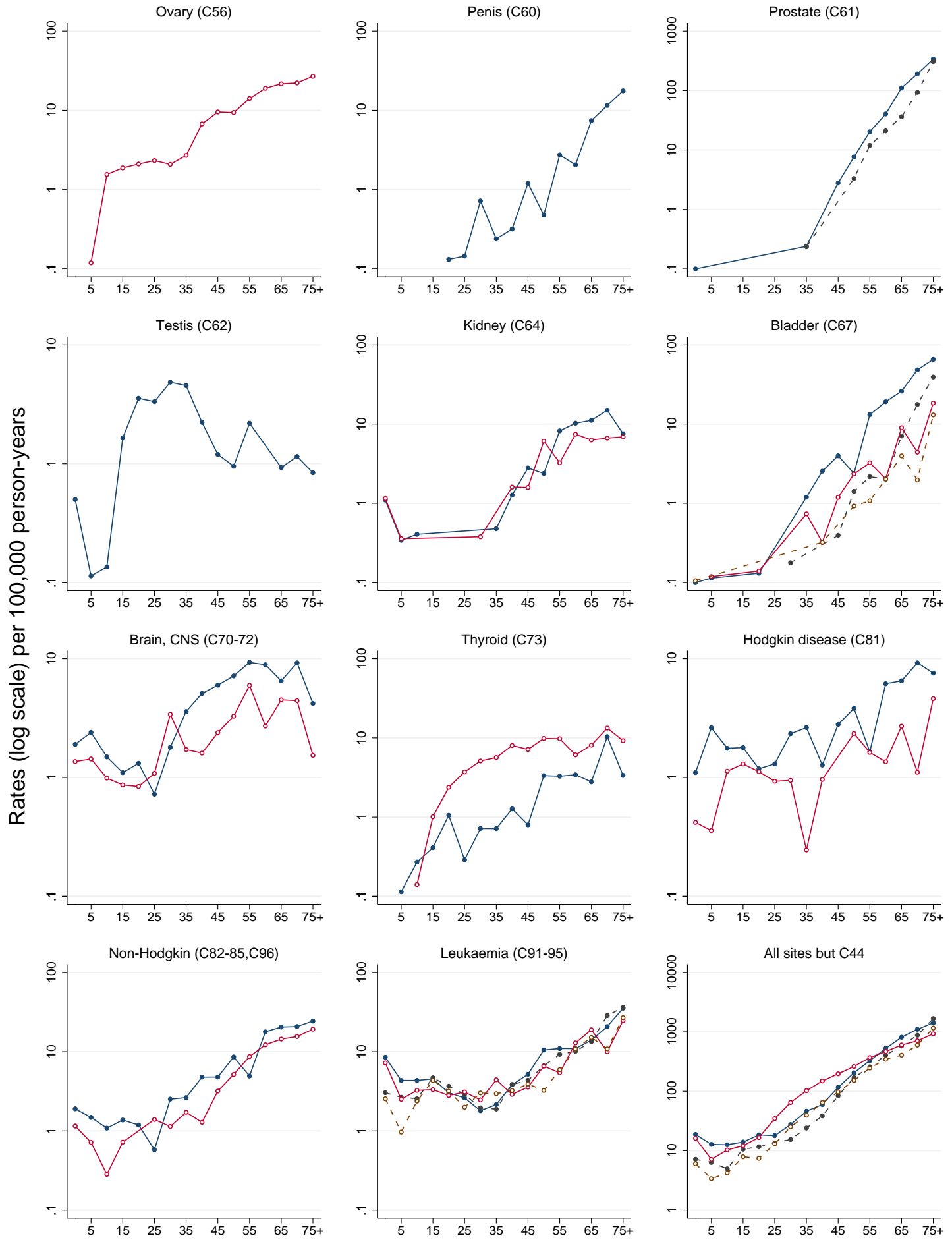
COSTA RICA (1985–1989)

Age-specific incidence and mortality rates per 100,000 person-years



COSTA RICA (1985-1989)

Age-specific incidence and mortality rates per 100,000 person-years



COSTA RICA (2003-2007)
Number of Cases in Major Diagnosis Groups
per Calendar Year

SITE	YEAR					TOTAL n (%)
	2003 n (%)	2004 n (%)	2005 n (%)	2006 n (%)	2007 n (%)	
MALES						
Lip, oral cavity, and pharynx (C00-C14)	78 (1.9)	93 (2.3)	104 (2.5)	88 (2.2)	96 (2.2)	459 (2.2)
Digestive organs (C15-C26)	1036 (25.3)	1021 (25.6)	1009 (24.6)	976 (23.9)	1080 (24.8)	5122 (24.8)
Respiratory organs (C30-C39)	251 (6.1)	221 (5.5)	271 (6.6)	286 (7.0)	247 (5.7)	1276 (6.2)
Bone, cartilage, and skin (C40-C44)	887 (21.7)	796 (20.0)	880 (21.4)	917 (22.4)	988 (22.7)	4468 (21.7)
Breast (C50)	9 (0.2)	8 (0.2)	7 (0.2)	7 (0.2)	5 (0.1)	36 (0.2)
Male genitalia (C60-C63)	1017 (24.8)	991 (24.9)	991 (24.1)	1024 (25.0)	1076 (24.7)	5099 (24.7)
Urinary organs (C64-C68)	153 (3.7)	180 (4.5)	168 (4.1)	178 (4.4)	181 (4.2)	860 (4.2)
Eye, brain, and thyroid (C69-C75)	131 (3.2)	137 (3.4)	136 (3.3)	134 (3.3)	131 (3.0)	669 (3.2)
Hematopoietic (C81-C96)	305 (7.4)	333 (8.4)	294 (7.2)	266 (6.5)	298 (6.8)	1496 (7.3)
Other and unspecified	227 (5.5)	202 (5.1)	248 (6.0)	213 (5.2)	259 (5.9)	1149 (5.6)
All sites	4094 (100.0)	3982 (100.0)	4108 (100.0)	4089 (100.0)	4361 (100.0)	20634 (100.0)
FEMALES						
Lip, oral cavity, and pharynx (C00-C14)	42 (1.1)	34 (0.9)	44 (1.1)	45 (1.1)	50 (1.2)	215 (1.1)
Digestive organs (C15-C26)	802 (20.5)	849 (21.9)	801 (19.6)	830 (20.4)	808 (19.0)	4090 (20.2)
Respiratory organs (C30-C39)	90 (2.3)	105 (2.7)	117 (2.9)	94 (2.3)	107 (2.5)	513 (2.5)
Bone, cartilage, and skin (C40-C44)	826 (21.1)	775 (20.0)	857 (21.0)	878 (21.6)	1022 (24.0)	4358 (21.6)
Breast (C50)	699 (17.8)	744 (19.2)	759 (18.6)	799 (19.7)	844 (19.8)	3845 (19.0)
Female genitalia (C51-C58)	642 (16.4)	574 (14.8)	612 (15.0)	509 (12.5)	542 (12.7)	2879 (14.3)
Urinary organs (C64-C68)	67 (1.7)	77 (2.0)	85 (2.1)	84 (2.1)	78 (1.8)	391 (1.9)
Eye, brain, and thyroid (C69-C75)	290 (7.4)	299 (7.7)	341 (8.3)	369 (9.1)	348 (8.2)	1647 (8.2)
Hematopoietic (C81-C96)	239 (6.1)	236 (6.1)	253 (6.2)	238 (5.9)	254 (6.0)	1220 (6.0)
Other and unspecified	221 (5.6)	186 (4.8)	220 (5.4)	216 (5.3)	201 (4.7)	1044 (5.2)
All sites	3918 (100.0)	3879 (100.0)	4089 (100.0)	4062 (100.0)	4254 (100.0)	20202 (100.0)
BOTH SEXES						
Lip, oral cavity, and pharynx (C00-C14)	120 (1.5)	127 (1.6)	148 (1.8)	133 (1.6)	146 (1.7)	674 (1.7)
Digestive organs (C15-C26)	1838 (22.9)	1870 (23.8)	1810 (22.1)	1806 (22.2)	1888 (21.9)	9212 (22.6)
Respiratory organs (C30-C39)	341 (4.3)	326 (4.1)	388 (4.7)	380 (4.7)	354 (4.1)	1789 (4.4)
Bone, cartilage, and skin (C40-C44)	1713 (21.4)	1571 (20.0)	1737 (21.2)	1795 (22.0)	2010 (23.3)	8826 (21.6)
Urinary organs (C64-C68)	220 (2.7)	257 (3.3)	253 (3.1)	262 (3.2)	259 (3.0)	1251 (3.1)
Eye, brain, and thyroid (C69-C75)	421 (5.3)	436 (5.5)	477 (5.8)	503 (6.2)	479 (5.6)	2316 (5.7)
Hematopoietic (C81-C96)	544 (6.8)	569 (7.2)	547 (6.7)	504 (6.2)	552 (6.4)	2716 (6.7)
Other and unspecified	448 (5.6)	388 (4.9)	468 (5.7)	429 (5.3)	460 (5.3)	2193 (5.4)
All sites	8012 (100.0)	7861 (100.0)	8197 (100.0)	8151 (100.0)	8615 (100.0)	40836 (100.0)

COSTA RICA (2003-2007)
Age Standardized Mortality Rate (World Population) per 100,000
in Major Diagnosis Groups per Calendar Year

SITE	YEAR					TOTAL ASMR (%)
	2003 ASMR (%)	2004 ASMR (%)	2005 ASMR (%)	2006 ASMR (%)	2007 ASMR (%)	
MALES						
Lip, oral cavity, and pharynx (C00-C14)	1.8 (1.7)	2.3 (2.1)	1.8 (1.9)	3.2 (3.3)	2.9 (3.1)	2.4 (2.5)
Digestive organs (C15-C26)	46.9 (44.6)	45.5 (42.3)	38.9 (41.4)	38.9 (39.7)	37.7 (40.2)	41.4 (41.6)
Respiratory organs (C30-C39)	12.0 (11.4)	11.3 (10.5)	10.5 (11.1)	10.0 (10.2)	9.0 (9.6)	10.5 (10.6)
Bone, cartilage, and skin (C40-C44)	1.0 (0.9)	0.7 (0.7)	0.6 (0.7)	1.2 (1.2)	1.1 (1.2)	0.9 (0.9)
Male genitalia (C60-C63)	15.9 (15.1)	16.4 (15.3)	14.2 (15.1)	14.4 (14.7)	15.1 (16.1)	15.2 (15.3)
Urinary organs (C64-C68)	3.4 (3.2)	3.9 (3.6)	4.1 (4.4)	3.4 (3.5)	3.8 (4.1)	3.7 (3.8)
Eye, brain, and thyroid (C69-C75)	3.5 (3.3)	4.2 (3.9)	3.3 (3.5)	3.2 (3.2)	2.8 (3.0)	3.4 (3.4)
Hematopoietic (C81-C96)	10.9 (10.4)	12.0 (11.1)	10.1 (10.8)	11.4 (11.7)	9.9 (10.5)	10.8 (10.9)
Other and unspecified	9.8 (9.3)	11.2 (10.4)	10.4 (11.1)	12.1 (12.4)	11.6 (12.3)	11.1 (11.1)
All sites	105.2 (100.0)	107.6 (100.0)	94.0 (100.0)	97.9 (100.0)	93.9 (100.0)	99.5 (100.0)
FEMALES						
Lip, oral cavity, and pharynx (C00-C14)	1.4 (1.7)	0.5 (0.7)	0.8 (1.0)	0.8 (1.1)	0.6 (0.9)	0.8 (1.1)
Digestive organs (C15-C26)	29.4 (36.5)	29.8 (37.9)	27.6 (36.1)	25.8 (33.9)	23.7 (35.7)	27.2 (36.0)
Respiratory organs (C30-C39)	4.9 (6.1)	4.7 (6.0)	4.6 (6.0)	3.2 (4.2)	3.4 (5.1)	4.1 (5.5)
Bone, cartilage, and skin (C40-C44)	0.6 (0.7)	0.4 (0.5)	0.6 (0.8)	0.7 (0.9)	0.2 (0.3)	0.5 (0.7)
Breast (C50)	11.8 (14.7)	11.4 (14.5)	10.5 (13.7)	12.4 (16.2)	11.3 (17.1)	11.5 (15.2)
Female genitalia (C51-C58)	11.5 (14.3)	11.9 (15.2)	10.8 (14.1)	10.3 (13.6)	8.8 (13.2)	10.6 (14.1)
Urinary organs (C64-C68)	1.7 (2.1)	1.6 (2.0)	1.8 (2.3)	1.4 (1.8)	1.2 (1.7)	1.5 (2.0)
Eye, brain, and thyroid (C69-C75)	2.3 (2.8)	2.6 (3.4)	2.9 (3.8)	2.5 (3.3)	2.2 (3.3)	2.5 (3.3)
Hematopoietic (C81-C96)	8.5 (10.6)	8.1 (10.3)	8.7 (11.4)	9.6 (12.6)	7.5 (11.2)	8.5 (11.2)
Other and unspecified	9.9 (12.4)	8.2 (10.4)	9.0 (11.8)	10.2 (13.4)	8.0 (12.0)	9.1 (12.0)
All sites	80.3 (100.0)	78.7 (100.0)	76.5 (100.0)	76.3 (100.0)	66.4 (100.0)	75.4 (100.0)
BOTH SEXES						
Lip, oral cavity, and pharynx (C00-C14)	1.6 (1.7)	1.4 (1.5)	1.3 (1.5)	2.0 (2.3)	1.7 (2.1)	1.6 (1.8)
Digestive organs (C15-C26)	37.8 (41.1)	37.3 (40.5)	33.0 (39.1)	32.0 (37.2)	30.3 (38.3)	33.9 (39.2)
Respiratory organs (C30-C39)	8.3 (9.0)	7.9 (8.5)	7.4 (8.8)	6.4 (7.5)	6.0 (7.6)	7.2 (8.3)
Bone, cartilage, and skin (C40-C44)	0.8 (0.8)	0.6 (0.6)	0.6 (0.7)	0.9 (1.1)	0.6 (0.8)	0.7 (0.8)
Urinary organs (C64-C68)	2.5 (2.7)	2.7 (2.9)	2.9 (3.4)	2.4 (2.7)	2.5 (3.1)	2.6 (3.0)
Eye, brain, and thyroid (C69-C75)	2.9 (3.1)	3.4 (3.7)	3.1 (3.7)	2.8 (3.3)	2.5 (3.2)	2.9 (3.4)
Hematopoietic (C81-C96)	9.7 (10.5)	10.0 (10.8)	9.4 (11.1)	10.5 (12.2)	8.6 (10.9)	9.6 (11.1)
Other and unspecified	9.9 (10.8)	9.6 (10.5)	9.7 (11.5)	11.1 (12.9)	9.7 (12.3)	10.0 (11.6)
All sites	91.9 (100.0)	92.2 (100.0)	84.5 (100.0)	86.2 (100.0)	79.1 (100.0)	86.5 (100.0)

COSTA RICA (2003-2007)

Incidence per 100,000 by Age Group (years)

Males

SITE	ALL CASES	UNK AGE	0-4	5-9	10-14	15-19	20-24	25-29	30-34	35-39	40-44	45-49	50-54	55-59	60-64	65-69	70-74	75+	CRUDE RATE	ASR (W)	CUM. RATE (0-74)†	MV (%)	DCO (%)	Rank‡	ICD10
Lip, oral cavity, and pharynx (C00-14)	459	0	.	0.4	1.5	1.4	1.1	0.5	1.2	1.0	3.6	5.0	9.6	14.4	20.5	22.6	30.1	37.4	4.2	5.0	0.56	93	3	10	C00-14
Oesophagus (C15)	189	0	0.1	0.5	1.6	5.0	6.8	13.8	26.2	32.1	1.7	2.2	0.27	74	14	17	C15
Stomach (C16)	2380	4	.	.	.	0.1	0.5	1.2	1.5	7.2	10.0	20.3	34.6	58.7	95.7	149.9	229.8	349.1	22.0	26.5	3.05	80	11	2	C16
Colon (C18)	854	1	.	.	0.3	0.4	0.5	1.2	1.5	2.9	5.7	9.2	13.8	21.1	39.1	51.6	60.2	109.5	7.9	9.4	1.04	80	8		C18
Rectum (C19-20)	465	0	.	.	.	0.1	0.3	0.5	1.0	2.4	2.8	3.7	10.2	14.4	22.4	27.5	36.0	49.3	4.3	5.2	0.61	90	3		C19-20
Colorectal (C18-20)	1319	1	.	.	0.3	0.4	0.8	1.7	2.5	5.3	8.4	12.9	24.0	35.5	61.5	79.1	96.2	158.7	12.2	14.6	1.64	84	6	3	C18-20
Anus (C21)	44	0	0.1	0.3	0.4	0.5	1.0	1.4	2.3	4.4	1.3	3.5	0.4	0.5	0.06	98	0	23	C21
Colon, rectum and anus (C18-21)	1363	1	.	.	0.3	0.4	0.8	1.7	2.6	5.5	8.8	13.4	25.0	36.9	63.8	83.5	97.5	162.3	12.6	15.1	1.70	84	6		C18-21
Liver (C22)	505	0	0.6	0.3	0.4	0.6	0.5	0.7	0.2	1.3	1.4	3.1	5.7	11.6	20.1	29.0	48.4	77.0	4.7	5.6	0.62	32	35	7	C22
Gallbladder (C23-24)	160	0	0.5	0.4	0.6	3.0	3.0	7.6	10.3	16.4	25.1	1.5	1.8	0.21	58	14	20	C23-24
Pancreas (C25)	402	0	0.2	0.1	0.2	0.8	1.8	2.8	6.1	9.1	11.0	29.0	42.6	62.9	3.7	4.5	0.52	32	27	11	C25
Nose, sinuses (C30-31)	34	1	0.3	0.1	.	0.1	.	0.6	0.2	1.1	0.8	1.5	3.3	4.0	0.3	0.4	0.04	94	0	26	C30-31
Larynx (C32)	263	1	0.1	0.2	0.4	0.7	1.9	6.1	7.2	8.4	19.7	26.8	35.2	2.4	3.0	0.36	90	3	15	C32
Lung, trachea and bronchus (C33-34)	934	0	0.3	0.4	0.2	0.8	1.7	7.0	10.6	20.0	36.1	69.8	91.0	158.7	8.6	10.5	1.19	61	22	4	C33-34
Melanoma of skin (C43)	234	0	.	0.2	.	0.3	0.7	0.3	1.0	0.8	2.0	3.1	4.3	7.8	11.8	9.8	15.7	20.2	2.2	2.5	0.29	100	0	16	C43
Mesothelioma (C45)	13	0	0.1	0.1	.	.	0.3	1.5	1.0	0.7	1.3	0.1	0.2	0.02	100	0	27	C45
Kaposi sarcoma (C46)	53	0	0.2	1.0	0.7	0.9	1.1	0.5	0.4	0.3	.	.	2.6	4.8	0.5	0.5	0.04	100	0	24	C46
Breast (C50)	36	0	.	.	.	0.1	.	.	.	0.3	0.4	0.3	0.6	0.8	1.5	0.5	2.0	6.2	0.3	0.4	0.03	81	8	25	C50
Penis (C60)	110	0	0.1	0.5	0.4	1.0	0.7	1.4	2.4	3.0	3.8	7.4	7.9	8.4	1.0	1.2	0.14	99	0	22	C60
Prostate (C61)	4567	39	0.5	1.7	9.0	39.8	93.1	241.2	403.9	534.2	724.7	42.2	53.8	6.67	80	9	1	C61
Testis (C62)	409	0	0.5	0.3	0.3	3.6	8.6	9.4	9.1	4.4	4.2	2.0	2.4	0.3	1.5	2.0	2.0	2.2	3.8	3.4	0.25	92	0	14	C62
Kidney (C64)	359	2	1.1	0.6	0.5	.	0.1	.	0.2	1.4	2.5	4.2	10.0	16.1	16.3	22.1	23.6	19.8	3.3	4.1	0.50	75	9	12	C64
Bladder (C67)	486	1	.	.	.	0.1	0.1	0.1	0.1	0.8	1.4	2.3	6.3	9.4	15.2	34.4	50.4	86.6	4.5	5.4	0.60	81	4	9	C67
Brain, CNS (C70-72)	359	0	1.7	2.5	1.5	1.1	0.8	1.6	1.9	2.9	3.0	4.4	5.9	8.9	10.3	14.2	11.8	18.5	3.3	3.7	0.36	70	13	13	C70-72
Thyroid (C73)	215	5	.	0.1	0.2	0.6	0.9	1.2	1.4	3.5	4.7	3.3	5.3	4.7	2.7	8.4	3.9	4.8	2.0	2.1	0.21	96	0	18	C73
Hodgkin disease (C81)	205	1	0.3	2.0	1.2	1.3	2.6	2.4	2.9	1.0	2.4	1.1	1.8	2.2	4.6	2.9	3.9	3.1	1.9	1.9	0.16	100	0	19	C81
Non-Hodgkin lymphoma (C82-85,C96)	646	5	1.4	1.3	1.7	1.9	1.5	1.8	3.4	4.4	5.9	7.3	9.3	13.0	23.2	26.5	39.9	52.3	6.0	6.8	0.72	100	0	6	C82-85,C96
Multiple myeloma (C88-C90)	111	0	0.3	0.7	0.9	2.4	5.0	3.4	9.3	10.5	10.6	1.0	1.3	0.16	100	0	21	C88-C90
Lymphoid leukaemia (C91)	290	0	6.2	4.8	1.8	2.2	1.6	1.4	0.6	0.8	1.3	1.9	1.8	1.9	4.6	4.4	8.5	11.0	2.7	3.0	0.22	100	0		C91
Myeloid leukaemia (C92-94)	212	1	1.3	0.5	0.6	1.0	0.8	1.1	1.1	1.6	2.1	2.2	2.8	3.0	4.2	9.3	11.1	15.4	2.0	2.2	0.21	100	0		C92-94
Leukaemia unspecified (C95)	32	1	0.1	.	.	0.4	0.1	0.1	0.2	0.4	0.3	0.6	0.2	0.3	0.4	1.5	2.6	1.3	0.3	0.3	0.04	100	0		C95
Leukaemia (C91-95)	534	2	7.5	5.3	2.4	3.6	2.5	2.6	2.0	2.8	3.7	4.7	4.9	5.3	9.1	15.2	22.3	27.7	4.9	5.5	0.47	100	0	8	C91-95
Other and unspecified (O&U)	941	4	0.8	0.8	0.4	1.1	1.0	1.0	2.5	1.9	4.1	6.7	12.4	23.6	33.4	56.0	70.0	141.6	8.7	10.2	1.08	40	27	5	O&U
All sites but C44 (ALLbC44)	16494	67	16.5	14.4	12.2	19.2	25.4	29.4	35.1	48.3	70.1	113.1	219.1	369.7	666.6	1059.8	1438.2	2110.7	152.4	182.5	20.77	77	10		ALLbC44
All sites (ALL)	20634	100	16.6	14.5	13.2	19.6	27.2	32.4	42.2	61.4	94.1	145.2	279.5	473.0	837.5	1323.2	1783.2	2687.2	190.7	228.3	25.94	81	8		ALL

UNK, Unknown; ASR (W), Age Standardized Rate (World Population); CUM., Cumulative; MV, Microscopic Verification; DCO, Death Certificate Only

†Percent

‡Rank based on highest ASR excluding: All sites but C44 and All sites

COSTA RICA (2003-2007)

Incidence per 100,000 by Age Group (years)

Females

SITE	ALL CASES	UNK AGE	0-4	5-9	10-14	15-19	20-24	25-29	30-34	35-39	40-44	45-49	50-54	55-59	60-64	65-69	70-74	75+	CRUDE RATE	ASR (W)	CUM. RATE (0-74)†	MV (%)	DCO (%)	Rank‡	ICD10
Lip, oral cavity, and pharynx (C00-14)	215	2	0.1	0.1	0.4	1.3	0.6	0.3	0.7	1.3	2.0	3.0	3.7	3.0	8.1	7.9	11.2	17.3	2.0	2.1	0.22	94	3	18	C00-14
Oesophagus (C15)	63	0	0.1	0.1	0.3	0.8	0.3	0.7	2.8	5.3	13.3	0.6	0.6	0.05	52	25	23	C15
Stomach (C16)	1512	1	.	.	.	0.3	0.4	1.1	5.9	6.0	11.3	17.0	19.9	31.1	51.3	77.4	108.6	184.0	14.4	15.0	1.65	80	9	2	C16
Colon (C18)	950	0	.	0.1	.	0.1	0.9	1.6	1.8	3.3	5.8	10.4	16.9	20.9	31.2	46.4	64.6	116.8	9.1	9.4	1.02	77	13		C18
Rectum (C19-20)	402	0	.	.	.	0.1	0.2	0.6	1.0	2.2	3.3	4.2	7.8	11.3	18.0	18.5	24.7	39.2	3.8	4.1	0.46	87	4		C19-20
Colorectal (C18-20)	1352	0	.	0.1	.	0.2	1.1	2.2	2.9	5.5	9.1	14.6	24.7	32.2	49.1	64.9	89.2	156.0	12.9	13.6	1.48	80	10	4	C18-20
Anus (C21)	56	1	0.1	.	0.1	0.2	1.2	2.8	5.5	2.8	1.8	4.3	0.5	0.6	0.07	96	0	22	C21
Colon, rectum and anus (C18-21)	1408	1	.	0.1	.	0.2	1.1	2.2	3.0	5.5	9.2	14.7	25.9	34.9	54.6	67.7	91.0	160.3	13.4	14.2	1.55	81	10		C18-21
Liver (C22)	349	1	0.2	0.1	.	0.1	0.2	0.2	0.5	1.0	0.8	1.9	3.3	4.1	8.8	26.0	27.6	54.6	3.3	3.5	0.38	24	44	13	C22
Gallbladder (C23-24)	289	1	0.3	0.4	1.1	2.7	3.1	7.7	9.2	13.4	24.7	42.8	2.8	2.9	0.31	65	15	14	C23-24
Pancreas (C25)	373	0	0.1	0.1	0.5	0.5	2.9	5.3	7.2	8.8	23.6	35.8	56.4	3.6	3.7	0.42	34	28	12	C25
Nose, sinuses (C30-31)	26	0	.	.	.	0.1	.	0.1	.	0.3	0.5	0.3	.	0.3	0.7	2.3	1.8	1.8	0.2	0.3	0.03	100	0	24	C30-31
Larynx (C32)	25	0	0.1	0.1	0.1	0.2	0.4	1.7	1.1	0.9	1.2	2.2	0.2	0.2	0.03	84	16	25	C32
Lung, trachea and bronchus (C33-34)	453	1	0.1	0.3	0.7	0.8	1.2	3.4	6.8	9.9	19.4	31.1	39.9	53.9	4.3	4.7	0.57	66	20	10	C33-34
Melanoma of skin (C43)	221	0	.	0.1	.	0.5	0.4	1.5	1.3	2.6	1.9	3.2	5.3	4.1	5.1	10.7	7.0	15.8	2.1	2.2	0.22	100	0	17	C43
Mesothelioma (C45)	5	0	0.3	.	.	0.2	.	0.3	.	.	.	0.4	0.0	0.0	0.00	100	0	27	C45
Kaposi sarcoma (C46)	9	0	0.2	0.2	0.2	.	0.4	0.5	.	1.1	0.1	0.1	0.01	100	0	26	C46
Breast (C50)	3845	20	.	.	.	0.1	1.1	3.7	11.4	30.0	54.1	84.6	104.4	141.1	142.2	158.5	165.6	181.5	36.6	39.7	4.51	95	2	1	C50
Cervix uteri (C53)	1465	4	.	.	.	0.2	2.6	8.5	18.4	25.0	28.1	32.4	31.0	32.2	32.6	32.4	36.4	46.4	14.0	13.9	1.40	90	3	3	C53
Corpus uteri (C54)	658	0	0.1	0.1	1.2	3.3	5.2	10.3	15.0	23.7	32.6	49.1	35.2	38.1	6.3	7.2	0.88	93	3	7	C54
Ovary (C56)	546	0	0.1	0.2	0.9	1.9	1.7	2.3	2.6	3.5	5.7	9.0	12.3	14.3	17.6	22.3	27.6	27.7	5.2	5.5	0.61	82	6	8	C56
Kidney (C64)	230	1	1.2	0.2	0.1	.	0.1	0.2	0.5	0.4	1.5	3.4	5.3	8.5	7.0	10.7	17.6	15.8	2.2	2.4	0.28	74	9	16	C64
Bladder (C67)	149	1	0.3	0.4	0.4	0.8	1.0	3.3	4.4	8.8	13.5	23.0	1.4	1.5	0.17	73	7	19	C67
Brain, CNS (C70-72)	260	0	2.0	1.4	1.1	1.1	1.3	0.8	1.6	1.7	2.6	3.8	2.1	6.3	4.8	8.3	12.9	11.1	2.5	2.6	0.26	68	13	15	C70-72
Thyroid (C73)	1343	10	.	0.3	0.5	2.3	4.4	10.9	17.1	24.1	26.2	32.7	32.5	29.2	19.8	21.8	22.3	17.3	12.8	12.6	1.23	97	1	5	C73
Hodgkin disease (C81)	156	0	0.1	0.9	0.8	1.2	2.7	2.3	1.7	0.9	1.2	0.8	1.4	2.2	1.5	2.8	2.9	5.0	1.5	1.4	0.12	100	0	20	C81
Non-Hodgkin lymphoma (C82-85,C96)	530	5	0.7	0.6	0.9	1.0	1.1	1.3	2.2	3.0	3.5	6.6	9.5	12.9	19.1	23.6	35.2	38.8	5.1	5.4	0.61	100	0	9	C82-85,C96
Multiple myeloma (C88-C90)	95	1	0.3	0.5	1.3	1.2	4.1	4.4	8.8	4.7	7.2	0.9	1.0	0.13	100	0	21	C88-C90
Lymphoid leukaemia (C91)	259	1	7.0	4.6	2.2	0.6	0.8	1.5	0.8	0.8	1.1	1.6	1.4	3.0	2.9	4.6	6.5	8.3	2.5	2.7	0.20	100	0		C91
Myeloid leukaemia (C92-94)	155	1	0.8	1.0	0.9	0.6	0.7	0.5	1.2	1.0	1.1	1.8	2.5	3.6	4.4	4.6	7.6	5.4	1.5	1.6	0.16	100	0		C92-94
Leukaemia unspecified (C95)	25	3	.	0.1	.	.	0.1	.	0.1	0.3	0.1	0.6	0.6	0.3	1.1	0.9	.	1.1	0.2	0.3	0.02	100	0		C95
Leukaemia (C91-95)	439	5	7.8	5.7	3.1	1.1	1.6	1.9	2.1	2.1	2.3	4.0	4.5	6.9	8.4	10.2	14.1	14.7	4.2	4.6	0.38	100	0	11	C91-95
Other and unspecified (O&U)	900	6	0.6	.	0.5	0.3	1.0	1.1	1.7	2.1	5.2	8.5	10.3	18.2	31.9	43.1	69.9	117.2	8.6	9.0	0.98	43	26	6	O&U
All sites but C44 (ALLbC44)	16131	61	15.9	10.4	11.2	13.9	22.3	40.6	75.5	118.9	168.8	257.0	312.4	419.1	509.1	682.3	837.2	1195.6	153.7	161.9	17.54	83	7		ALLbC44
All sites (ALL)	20202	81	15.9	10.8	11.3	14.6	24.2	45.0	85.4	135.2	196.2	305.5	382.3	522.8	645.8	880.7	1120.2	1653.9	192.5	202.8	22.07	86	6		ALL

UNK, Unknown; ASR (W), Age Standardized Rate (World Population); CUM., Cumulative; MV, Microscopic Verification; DCO, Death Certificate Only

†Percent

‡Rank based on highest ASR excluding: All sites but C44 and All sites

COSTA RICA (2003-2007)
Number of Deaths in Major Diagnosis Groups
per Calendar Year

SITE	YEAR					TOTAL n (%)
	2003 n (%)	2004 n (%)	2005 n (%)	2006 n (%)	2007 n (%)	
MALES						
Lip, oral cavity, and pharynx (C00-C14)	33 (1.8)	44 (2.2)	34 (1.9)	58 (3.0)	54 (2.8)	223 (2.4)
Digestive organs (C15-C26)	794 (42.9)	821 (41.3)	719 (40.1)	741 (38.9)	758 (39.3)	3833 (40.5)
Respiratory organs (C30-C39)	203 (11.0)	197 (9.9)	194 (10.8)	193 (10.1)	181 (9.4)	968 (10.2)
Bone, cartilage, and skin (C40-C44)	18 (1.0)	13 (0.7)	12 (0.7)	23 (1.2)	23 (1.2)	89 (0.9)
Male genitalia (C60-C63)	303 (16.4)	325 (16.4)	289 (16.1)	305 (16.0)	333 (17.3)	1555 (16.4)
Urinary organs (C64-C68)	59 (3.2)	73 (3.7)	80 (4.5)	65 (3.4)	76 (3.9)	353 (3.7)
Eye, brain, and thyroid (C69-C75)	59 (3.2)	79 (4.0)	64 (3.6)	62 (3.3)	58 (3.0)	322 (3.4)
Hematopoietic (C81-C96)	199 (10.8)	227 (11.4)	195 (10.9)	219 (11.5)	208 (10.8)	1048 (11.1)
Other and unspecified	182 (9.8)	207 (10.4)	205 (11.4)	240 (12.6)	237 (12.3)	1071 (11.3)
All sites	1850 (100.0)	1986 (100.0)	1792 (100.0)	1906 (100.0)	1928 (100.0)	9462 (100.0)
FEMALES						
Lip, oral cavity, and pharynx (C00-C14)	24 (1.6)	12 (0.8)	17 (1.1)	18 (1.1)	13 (0.9)	84 (1.1)
Digestive organs (C15-C26)	566 (36.7)	597 (38.2)	579 (36.9)	560 (34.5)	528 (36.0)	2830 (36.5)
Respiratory organs (C30-C39)	92 (6.0)	92 (5.9)	93 (5.9)	66 (4.1)	72 (4.9)	415 (5.3)
Bone, cartilage, and skin (C40-C44)	11 (0.7)	9 (0.6)	13 (0.8)	15 (0.9)	5 (0.3)	53 (0.7)
Breast (C50)	216 (14.0)	223 (14.3)	210 (13.4)	255 (15.7)	243 (16.6)	1147 (14.8)
Female genitalia (C51-C58)	227 (14.7)	235 (15.0)	216 (13.8)	213 (13.1)	188 (12.8)	1079 (13.9)
Urinary organs (C64-C68)	29 (1.9)	29 (1.9)	39 (2.5)	30 (1.9)	27 (1.8)	154 (2.0)
Eye, brain, and thyroid (C69-C75)	44 (2.9)	52 (3.3)	58 (3.7)	52 (3.2)	47 (3.2)	253 (3.3)
Hematopoietic (C81-C96)	166 (10.8)	157 (10.0)	175 (11.1)	208 (12.8)	165 (11.3)	871 (11.2)
Other and unspecified	200 (13.0)	173 (11.1)	186 (11.8)	220 (13.6)	186 (12.7)	965 (12.4)
All sites	1543 (100.0)	1564 (100.0)	1570 (100.0)	1621 (100.0)	1465 (100.0)	7763 (100.0)
BOTH SEXES						
Lip, oral cavity, and pharynx (C00-C14)	57 (1.7)	56 (1.6)	51 (1.5)	76 (2.2)	67 (2.0)	307 (1.8)
Digestive organs (C15-C26)	1360 (40.1)	1418 (39.9)	1298 (38.6)	1301 (36.9)	1286 (37.9)	6663 (38.7)
Respiratory organs (C30-C39)	295 (8.7)	289 (8.1)	287 (8.5)	259 (7.3)	253 (7.5)	1383 (8.0)
Bone, cartilage, and skin (C40-C44)	29 (0.9)	22 (0.6)	25 (0.7)	38 (1.1)	28 (0.8)	142 (0.8)
Urinary organs (C64-C68)	88 (2.6)	102 (2.9)	119 (3.5)	95 (2.7)	103 (3.0)	507 (2.9)
Eye, brain, and thyroid (C69-C75)	103 (3.0)	131 (3.7)	122 (3.6)	114 (3.2)	105 (3.1)	575 (3.3)
Hematopoietic (C81-C96)	365 (10.8)	384 (10.8)	370 (11.0)	427 (12.1)	373 (11.0)	1919 (11.1)
Other and unspecified	382 (11.3)	380 (10.7)	391 (11.6)	460 (13.0)	423 (12.5)	2036 (11.8)
All sites	3393 (100.0)	3550 (100.0)	3362 (100.0)	3527 (100.0)	3393 (100.0)	17225 (100.0)

COSTA RICA (2003-2007)
Age Standardized Mortality Rate (World Population) per 100,000
in Major Diagnosis Groups per Calendar Year

SITE	YEAR					TOTAL ASMR (%)
	2003 ASMR (%)	2004 ASMR (%)	2005 ASMR (%)	2006 ASMR (%)	2007 ASMR (%)	
MALES						
Lip, oral cavity, and pharynx (C00-C14)	1.8 (1.7)	2.3 (2.1)	1.8 (1.9)	3.2 (3.3)	2.9 (3.1)	2.4 (2.5)
Digestive organs (C15-C26)	46.9 (44.6)	45.5 (42.3)	38.9 (41.4)	38.9 (39.7)	37.7 (40.2)	41.4 (41.6)
Respiratory organs (C30-C39)	12.0 (11.4)	11.3 (10.5)	10.5 (11.1)	10.0 (10.2)	9.0 (9.6)	10.5 (10.6)
Bone, cartilage, and skin (C40-C44)	1.0 (0.9)	0.7 (0.7)	0.6 (0.7)	1.2 (1.2)	1.1 (1.2)	0.9 (0.9)
Male genitalia (C60-C63)	15.9 (15.1)	16.4 (15.3)	14.2 (15.1)	14.4 (14.7)	15.1 (16.1)	15.2 (15.3)
Urinary organs (C64-C68)	3.4 (3.2)	3.9 (3.6)	4.1 (4.4)	3.4 (3.5)	3.8 (4.1)	3.7 (3.8)
Eye, brain, and thyroid (C69-C75)	3.5 (3.3)	4.2 (3.9)	3.3 (3.5)	3.2 (3.2)	2.8 (3.0)	3.4 (3.4)
Hematopoietic (C81-C96)	10.9 (10.4)	12.0 (11.1)	10.1 (10.8)	11.4 (11.7)	9.9 (10.5)	10.8 (10.9)
Other and unspecified	9.8 (9.3)	11.2 (10.4)	10.4 (11.1)	12.1 (12.4)	11.6 (12.3)	11.1 (11.1)
All sites	105.2 (100.0)	107.6 (100.0)	94.0 (100.0)	97.9 (100.0)	93.9 (100.0)	99.5 (100.0)
FEMALES						
Lip, oral cavity, and pharynx (C00-C14)	1.4 (1.7)	0.5 (0.7)	0.8 (1.0)	0.8 (1.1)	0.6 (0.9)	0.8 (1.1)
Digestive organs (C15-C26)	29.4 (36.5)	29.8 (37.9)	27.6 (36.1)	25.8 (33.9)	23.7 (35.7)	27.2 (36.0)
Respiratory organs (C30-C39)	4.9 (6.1)	4.7 (6.0)	4.6 (6.0)	3.2 (4.2)	3.4 (5.1)	4.1 (5.5)
Bone, cartilage, and skin (C40-C44)	0.6 (0.7)	0.4 (0.5)	0.6 (0.8)	0.7 (0.9)	0.2 (0.3)	0.5 (0.7)
Breast (C50)	11.8 (14.7)	11.4 (14.5)	10.5 (13.7)	12.4 (16.2)	11.3 (17.1)	11.5 (15.2)
Female genitalia (C51-C58)	11.5 (14.3)	11.9 (15.2)	10.8 (14.1)	10.3 (13.6)	8.8 (13.2)	10.6 (14.1)
Urinary organs (C64-C68)	1.7 (2.1)	1.6 (2.0)	1.8 (2.3)	1.4 (1.8)	1.2 (1.7)	1.5 (2.0)
Eye, brain, and thyroid (C69-C75)	2.3 (2.8)	2.6 (3.4)	2.9 (3.8)	2.5 (3.3)	2.2 (3.3)	2.5 (3.3)
Hematopoietic (C81-C96)	8.5 (10.6)	8.1 (10.3)	8.7 (11.4)	9.6 (12.6)	7.5 (11.2)	8.5 (11.2)
Other and unspecified	9.9 (12.4)	8.2 (10.4)	9.0 (11.8)	10.2 (13.4)	8.0 (12.0)	9.1 (12.0)
All sites	80.3 (100.0)	78.7 (100.0)	76.5 (100.0)	76.3 (100.0)	66.4 (100.0)	75.4 (100.0)
BOTH SEXES						
Lip, oral cavity, and pharynx (C00-C14)	1.6 (1.7)	1.4 (1.5)	1.3 (1.5)	2.0 (2.3)	1.7 (2.1)	1.6 (1.8)
Digestive organs (C15-C26)	37.8 (41.1)	37.3 (40.5)	33.0 (39.1)	32.0 (37.2)	30.3 (38.3)	33.9 (39.2)
Respiratory organs (C30-C39)	8.3 (9.0)	7.9 (8.5)	7.4 (8.8)	6.4 (7.5)	6.0 (7.6)	7.2 (8.3)
Bone, cartilage, and skin (C40-C44)	0.8 (0.8)	0.6 (0.6)	0.6 (0.7)	0.9 (1.1)	0.6 (0.8)	0.7 (0.8)
Urinary organs (C64-C68)	2.5 (2.7)	2.7 (2.9)	2.9 (3.4)	2.4 (2.7)	2.5 (3.1)	2.6 (3.0)
Eye, brain, and thyroid (C69-C75)	2.9 (3.1)	3.4 (3.7)	3.1 (3.7)	2.8 (3.3)	2.5 (3.2)	2.9 (3.4)
Hematopoietic (C81-C96)	9.7 (10.5)	10.0 (10.8)	9.4 (11.1)	10.5 (12.2)	8.6 (10.9)	9.6 (11.1)
Other and unspecified	9.9 (10.8)	9.6 (10.5)	9.7 (11.5)	11.1 (12.9)	9.7 (12.3)	10.0 (11.6)
All sites	91.9 (100.0)	92.2 (100.0)	84.5 (100.0)	86.2 (100.0)	79.1 (100.0)	86.5 (100.0)

COSTA RICA (2003-2007)

Incidence per 100,000 by Age Group (years)

Males

SITE	ALL CASES	UNK AGE	0-4	5-9	10-14	15-19	20-24	25-29	30-34	35-39	40-44	45-49	50-54	55-59	60-64	65-69	70-74	75+	CRUDE RATE	ASR (W)	CUM. RATE (0-74)†	MV (%)	DCO (%)	Rank‡	ICD10
Lip, oral cavity, and pharynx (C00-14)	459	0	.	0.4	1.5	1.4	1.1	0.5	1.2	1.0	3.6	5.0	9.6	14.4	20.5	22.6	30.1	37.4	4.2	5.0	0.56	93	3	10	C00-14
Oesophagus (C15)	189	0	0.1	0.5	1.6	5.0	6.8	13.8	26.2	32.1	1.7	2.2	0.27	74	14	17	C15
Stomach (C16)	2380	4	.	.	.	0.1	0.5	1.2	1.5	7.2	10.0	20.3	34.6	58.7	95.7	149.9	229.8	349.1	22.0	26.5	3.05	80	11	2	C16
Colon (C18)	854	1	.	.	0.3	0.4	0.5	1.2	1.5	2.9	5.7	9.2	13.8	21.1	39.1	51.6	60.2	109.5	7.9	9.4	1.04	80	8		C18
Rectum (C19-20)	465	0	.	.	.	0.1	0.3	0.5	1.0	2.4	2.8	3.7	10.2	14.4	22.4	27.5	36.0	49.3	4.3	5.2	0.61	90	3		C19-20
Colorectal (C18-20)	1319	1	.	.	0.3	0.4	0.8	1.7	2.5	5.3	8.4	12.9	24.0	35.5	61.5	79.1	96.2	158.7	12.2	14.6	1.64	84	6	3	C18-20
Anus (C21)	44	0	0.1	0.3	0.4	0.5	1.0	1.4	2.3	4.4	1.3	3.5	0.4	0.5	0.06	98	0	23	C21
Colon, rectum and anus (C18-21)	1363	1	.	.	0.3	0.4	0.8	1.7	2.6	5.5	8.8	13.4	25.0	36.9	63.8	83.5	97.5	162.3	12.6	15.1	1.70	84	6		C18-21
Liver (C22)	505	0	0.6	0.3	0.4	0.6	0.5	0.7	0.2	1.3	1.4	3.1	5.7	11.6	20.1	29.0	48.4	77.0	4.7	5.6	0.62	32	35	7	C22
Gallbladder (C23-24)	160	0	0.5	0.4	0.6	3.0	3.0	7.6	10.3	16.4	25.1	1.5	1.8	0.21	58	14	20	C23-24
Pancreas (C25)	402	0	0.2	0.1	0.2	0.8	1.8	2.8	6.1	9.1	11.0	29.0	42.6	62.9	3.7	4.5	0.52	32	27	11	C25
Nose, sinuses (C30-31)	34	1	0.3	0.1	.	0.1	.	0.6	0.2	1.1	0.8	1.5	3.3	4.0	0.3	0.4	0.04	94	0	26	C30-31
Larynx (C32)	263	1	0.1	0.2	0.4	0.7	1.9	6.1	7.2	8.4	19.7	26.8	35.2	2.4	3.0	0.36	90	3	15	C32
Lung, trachea and bronchus (C33-34)	934	0	0.3	0.4	0.2	0.8	1.7	7.0	10.6	20.0	36.1	69.8	91.0	158.7	8.6	10.5	1.19	61	22	4	C33-34
Melanoma of skin (C43)	234	0	.	0.2	.	0.3	0.7	0.3	1.0	0.8	2.0	3.1	4.3	7.8	11.8	9.8	15.7	20.2	2.2	2.5	0.29	100	0	16	C43
Mesothelioma (C45)	13	0	0.1	0.1	.	.	0.3	1.5	1.0	0.7	1.3	0.1	0.2	0.02	100	0	27	C45
Kaposi sarcoma (C46)	53	0	0.2	1.0	0.7	0.9	1.1	0.5	0.4	0.3	.	.	2.6	4.8	0.5	0.5	0.04	100	0	24	C46
Breast (C50)	36	0	0.3	0.4	0.3	0.6	0.8	1.5	0.5	2.0	6.2	0.3	0.4	0.03	81	8	25	C50
Penis (C60)	110	0	0.1	0.5	0.4	1.0	0.7	1.4	2.4	3.0	3.8	7.4	7.9	8.4	1.0	1.2	0.14	99	0	22	C60
Prostate (C61)	4567	39	0.5	1.7	9.0	39.8	93.1	241.2	403.9	534.2	724.7	42.2	53.8	6.67	80	9	1	C61
Testis (C62)	409	0	0.5	0.3	0.3	3.6	8.6	9.4	9.1	4.4	4.2	2.0	2.4	0.3	1.5	2.0	2.0	2.2	3.8	3.4	0.25	92	0	14	C62
Kidney (C64)	359	2	1.1	0.6	0.5	.	0.1	.	0.2	1.4	2.5	4.2	10.0	16.1	16.3	22.1	23.6	19.8	3.3	4.1	0.50	75	9	12	C64
Bladder (C67)	486	1	.	.	.	0.1	0.1	0.1	0.1	0.8	1.4	2.3	6.3	9.4	15.2	34.4	50.4	86.6	4.5	5.4	0.60	81	4	9	C67
Brain, CNS (C70-72)	359	0	1.7	2.5	1.5	1.1	0.8	1.6	1.9	2.9	3.0	4.4	5.9	8.9	10.3	14.2	11.8	18.5	3.3	3.7	0.36	70	13	13	C70-72
Thyroid (C73)	215	5	.	0.1	0.2	0.6	0.9	1.2	1.4	3.5	4.7	3.3	5.3	4.7	2.7	8.4	3.9	4.8	2.0	2.1	0.21	96	0	18	C73
Hodgkin disease (C81)	205	1	0.3	2.0	1.2	1.3	2.6	2.4	2.9	1.0	2.4	1.1	1.8	2.2	4.6	2.9	3.9	3.1	1.9	1.9	0.16	100	0	19	C81
Non-Hodgkin lymphoma (C82-85,C96)	646	5	1.4	1.3	1.7	1.9	1.5	1.8	3.4	4.4	5.9	7.3	9.3	13.0	23.2	26.5	39.9	52.3	6.0	6.8	0.72	100	0	6	C82-85,C96
Multiple myeloma (C88-C90)	111	0	0.3	0.7	0.9	2.4	5.0	3.4	9.3	10.5	10.6	1.0	1.3	0.16	100	0	21	C88-C90
Lymphoid leukaemia (C91)	290	0	6.2	4.8	1.8	2.2	1.6	1.4	0.6	0.8	1.3	1.9	1.8	1.9	4.6	4.4	8.5	11.0	2.7	3.0	0.22	100	0		C91
Myeloid leukaemia (C92-94)	212	1	1.3	0.5	0.6	1.0	0.8	1.1	1.1	1.6	2.1	2.2	2.8	3.0	4.2	9.3	11.1	15.4	2.0	2.2	0.21	100	0		C92-94
Leukaemia unspecified (C95)	32	1	0.1	.	.	0.4	0.1	0.1	0.2	0.4	0.3	0.6	0.2	0.3	0.4	1.5	2.6	1.3	0.3	0.3	0.04	100	0		C95
Leukaemia (C91-95)	534	2	7.5	5.3	2.4	3.6	2.5	2.6	2.0	2.8	3.7	4.7	4.9	5.3	9.1	15.2	22.3	27.7	4.9	5.5	0.47	100	0	8	C91-95
Other and unspecified (O&U)	941	4	0.8	0.8	0.4	1.1	1.0	1.0	2.5	1.9	4.1	6.7	12.4	23.6	33.4	56.0	70.0	141.6	8.7	10.2	1.08	40	27	5	O&U
All sites but C44 (ALLbC44)	16494	67	16.5	14.4	12.2	19.2	25.4	29.4	35.1	48.3	70.1	113.1	219.1	369.7	666.6	1059.8	1438.2	2110.7	152.4	182.5	20.77	77	10		ALLbC44
All sites (ALL)	20634	100	16.6	14.5	13.2	19.6	27.2	32.4	42.2	61.4	94.1	145.2	279.5	473.0	837.5	1323.2	1783.2	2687.2	190.7	228.3	25.94	81	8		ALL

UNK, Unknown; ASR (W), Age Standardized Rate (World Population); CUM., Cumulative; MV, Microscopic Verification; DCO, Death Certificate Only

†Percent

‡Rank based on highest ASR excluding: All sites but C44 and All sites

COSTA RICA (2003-2007)
Mortality per 100,000 by Age Group (years)
Females

SITE	ALL DEATHS	UNK AGE	0-4	5-9	10-14	15-19	20-24	25-29	30-34	35-39	40-44	45-49	50-54	55-59	60-64	65-69	70-74	75+	CRUDE RATE	ASMR (W)	CUM. RATE (0-74)†	Rank‡	ICD-10	
Lip, oral cavity, & pharynx (C00-14)	84	0	0.0	0.0	0.1	0.2	0.2	0.1	0.1	0.1	1.1	1.0	0.8	1.9	3.2	3.2	3.5	10.1	0.8	0.8	0.1	16	C00-14	
Oesophagus (C15)	57	0	0.0	0.0	0.0	0.0	0.0	0.0	0.0	0.0	0.0	0.2	0.8	0.6	0.7	3.2	4.7	11.5	0.5	0.5	0.1	20	C15	
Stomach (C16)	995	1	0.0	0.0	0.0	0.2	0.1	1.0	2.8	3.4	5.3	9.1	7.1	15.0	28.5	50.0	71.7	152.1	9.4	9.4	1.0	2	C16	
Colon (C18)	640	0	0.0	0.0	0.0	0.1	0.3	0.5	1.3	1.4	2.7	5.6	7.7	13.1	22.0	28.2	40.2	97.3	6.0	6.1	0.6		C18	
Rectum (C19-C20)	0	0	0.0	0.0	0.0	0.0		C19-C20
Colorectal (C18-20)	0	0	0.0	0.0	0.0	0.0	25	C18-20
Anus (C21)	0	0	0.0	0.0	0.0	0.0	25	C21
Colon, rectum and anus (C18-21)	803	0	0.0	0.0	0.0	0.1	0.4	0.7	1.7	1.6	3.6	6.6	9.7	16.9	26.7	40.4	49.5	119.3	7.6	7.7	0.8		C18-21	
Liver (C22)	378	1	0.1	0.1	0.0	0.0	0.2	0.2	0.5	0.6	0.9	2.4	2.0	5.8	11.9	22.7	35.5	57.6	3.6	3.7	0.4	8	C22	
Gallbladder (C23-24)	190	0	0.0	0.0	0.0	0.0	0.0	0.0	0.0	0.0	0.7	1.1	1.0	5.6	6.9	10.9	16.3	28.6	1.8	1.9	0.2	12	C23-24	
Pancreas (C25)	407	0	0.0	0.0	0.0	0.0	0.0	0.1	0.1	0.3	0.3	3.4	5.7	6.9	8.7	25.4	34.4	65.6	3.8	3.9	0.4	6	C25	
Nose, sinuses (C30-31)	0	0	0.0	0.0	0.0	0.0	25	C30-31
Larynx (C32)	16	0	0.0	0.0	0.0	0.0	0.0	0.0	0.0	0.1	0.0	0.2	0.4	0.6	0.7	0.5	1.2	1.7	0.2	0.2	0.0	22	C32	
Lung (C33-34)	399	0	0.0	0.0	0.0	0.0	0.1	0.1	0.5	0.3	0.5	2.6	4.4	7.8	15.2	25.0	34.4	57.6	3.8	4.0	0.5	5	C33-34	
Melanoma of skin (C43)	53	0	0.0	0.0	0.0	0.1	0.1	0.2	0.0	0.4	0.4	0.3	1.2	1.9	1.4	0.5	2.3	6.6	0.5	0.5	0.0	21	C43	
Mesothelioma (C45)	0	0	0.0	0.0	0.0	0.0	25	C45
Kaposi sarcoma (C46)	0	0	0.0	0.0	0.0	0.0	25	C46
Breast (C50)	1147	1	0.0	0.0	0.0	0.0	0.3	0.8	1.4	5.0	10.1	19.4	26.5	37.5	36.1	55.0	62.3	102.9	10.8	11.5	1.3	1	C50	
Cervix uteri (C53)	629	1	0.0	0.0	0.0	0.0	0.2	1.4	3.1	5.3	6.9	10.1	13.5	14.2	15.2	17.7	35.0	61.0	5.9	6.0	0.6	4	C53	
Corpus uteri (C54)	169	0	0.0	0.0	0.0	0.0	0.0	0.0	0.1	0.0	0.3	0.6	1.8	5.0	6.9	10.0	14.6	24.1	1.6	1.7	0.2	13	C54	
Ovary (C56)	281	0	0.1	0.0	0.0	0.2	0.1	0.2	0.6	0.5	1.9	3.7	5.7	4.7	14.1	21.3	16.9	24.1	2.7	3.0	0.4	9	C56	
Kidney (C64)	93	0	0.0	0.2	0.1	0.1	0.2	0.0	0.0	0.1	0.1	0.8	0.8	2.5	2.2	6.4	7.6	11.9	0.9	0.9	0.1	15	C64	
Bladder (C67)	61	0	0.0	0.0	0.0	0.0	0.0	0.0	0.0	0.0	0.3	0.2	0.2	0.3	0.7	4.5	7.0	11.2	0.6	0.6	0.1	17	C67	
Brain, CNS (C70-72)	197	0	0.7	0.8	0.7	0.7	0.9	0.5	0.9	0.9	2.3	3.2	2.2	3.6	4.3	9.1	11.1	10.1	1.9	2.0	0.2	11	C70-72	
Thyroid (C73)	56	0	0.0	0.0	0.0	0.0	0.0	0.0	0.0	0.0	0.0	0.5	0.6	0.6	1.4	2.3	7.0	9.4	0.5	0.5	0.1	19	C73	
Hodgkin disease (C81)	63	0	0.0	0.0	0.2	0.3	0.2	0.2	0.1	0.4	0.4	1.0	0.0	1.4	1.8	0.9	2.3	8.7	0.6	0.6	0.0	18	C81	
Non-Hodgkin lymphoma (C82-85,C96)	277	0	0.0	0.1	0.1	0.6	0.8	0.9	0.9	1.0	1.1	2.9	4.2	6.7	4.3	13.2	21.0	31.4	2.6	2.7	0.3	10	C82-85,C96	
Multiple myeloma (C88+C90)	140	0	0.0	0.0	0.0	0.0	0.0	0.0	0.0	0.1	0.5	0.5	1.8	3.3	7.9	10.4	12.8	15.3	1.3	1.5	0.2	14	C88+C90	
Lymphoid leukaemia (C91)	0	0	0.0	0.0	0.0	0.0		C91
Myeloid leukaemia (C92-94)	0	0	0.0	0.0	0.0	0.0		C92-94
Leukaemia unspecified (C95)	0	0	0.0	0.0	0.0	0.0		C95
Leukaemia (C91-95)	391	0	1.1	1.4	1.7	1.8	1.6	1.8	1.4	1.7	2.3	4.7	5.5	6.4	9.0	13.6	16.3	33.5	3.7	3.8	0.4	7	C91-95	
Other and unspecified (O&U)	965	1	0.2	0.3	0.8	1.5	1.1	1.9	2.1	2.1	4.9	8.2	10.1	17.8	25.6	42.2	56.5	143.7	9.1	9.1	0.9	3	O&U	
All sites (ALL)	7763	4	2.2	3.0	3.6	5.6	6.6	10.3	16.2	23.8	43.0	81.7	104.7	165.0	232.2	385.1	520.2	983.0	73.3	75.4	8.0		ALL	

UNK, Unknown; ASMR (W), Age Standardized Mortality Rate (World Population); CUM., Cumulative

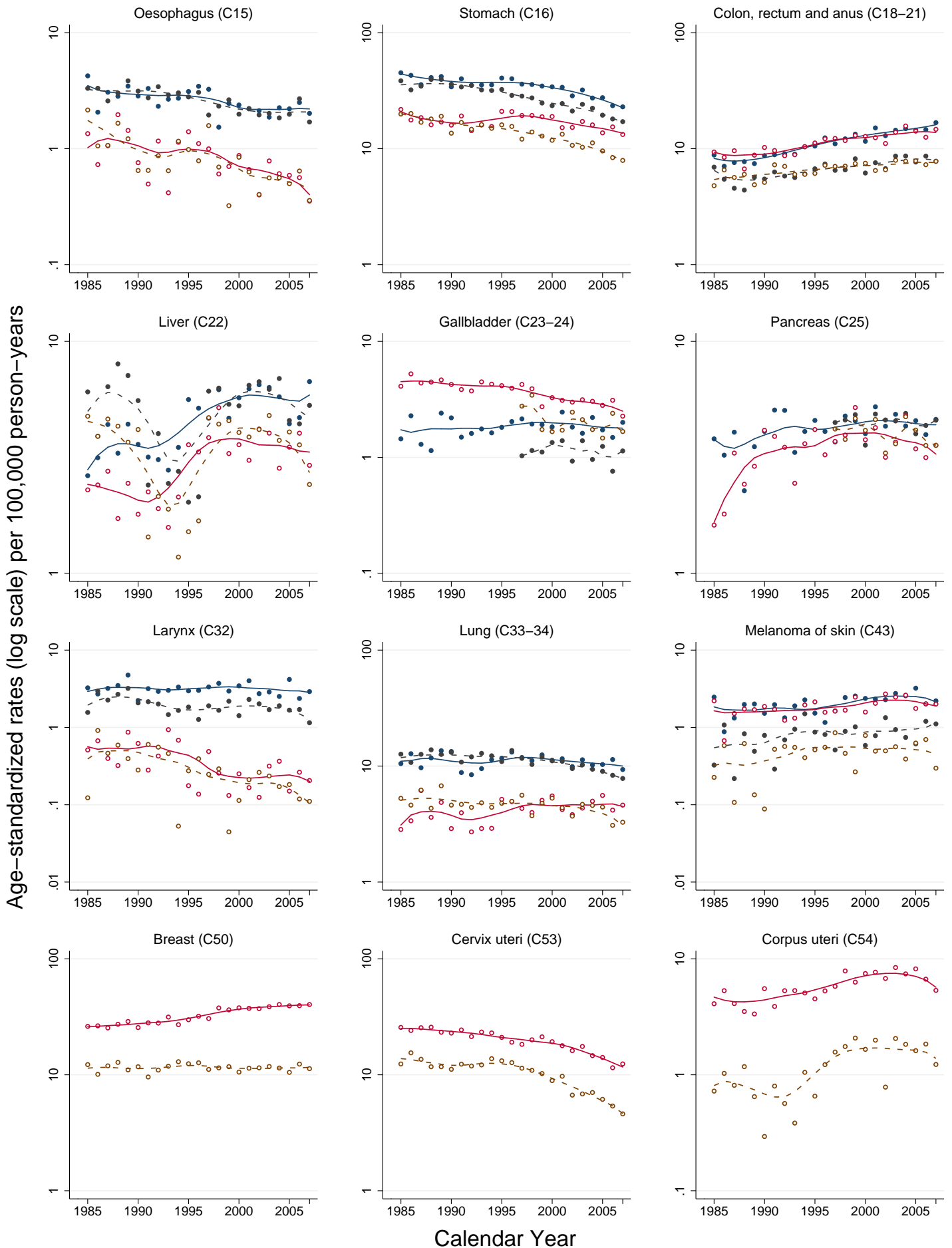
†Percent

‡Rank based on highest ASMR excluding: All sites but lung and All sites

COSTA RICA (1985–2007)

Trends in cancer incidence and mortality by sex, all ages

Symbols represent observed rates and lines represent the (LOWESS=0.5) smoothed trend

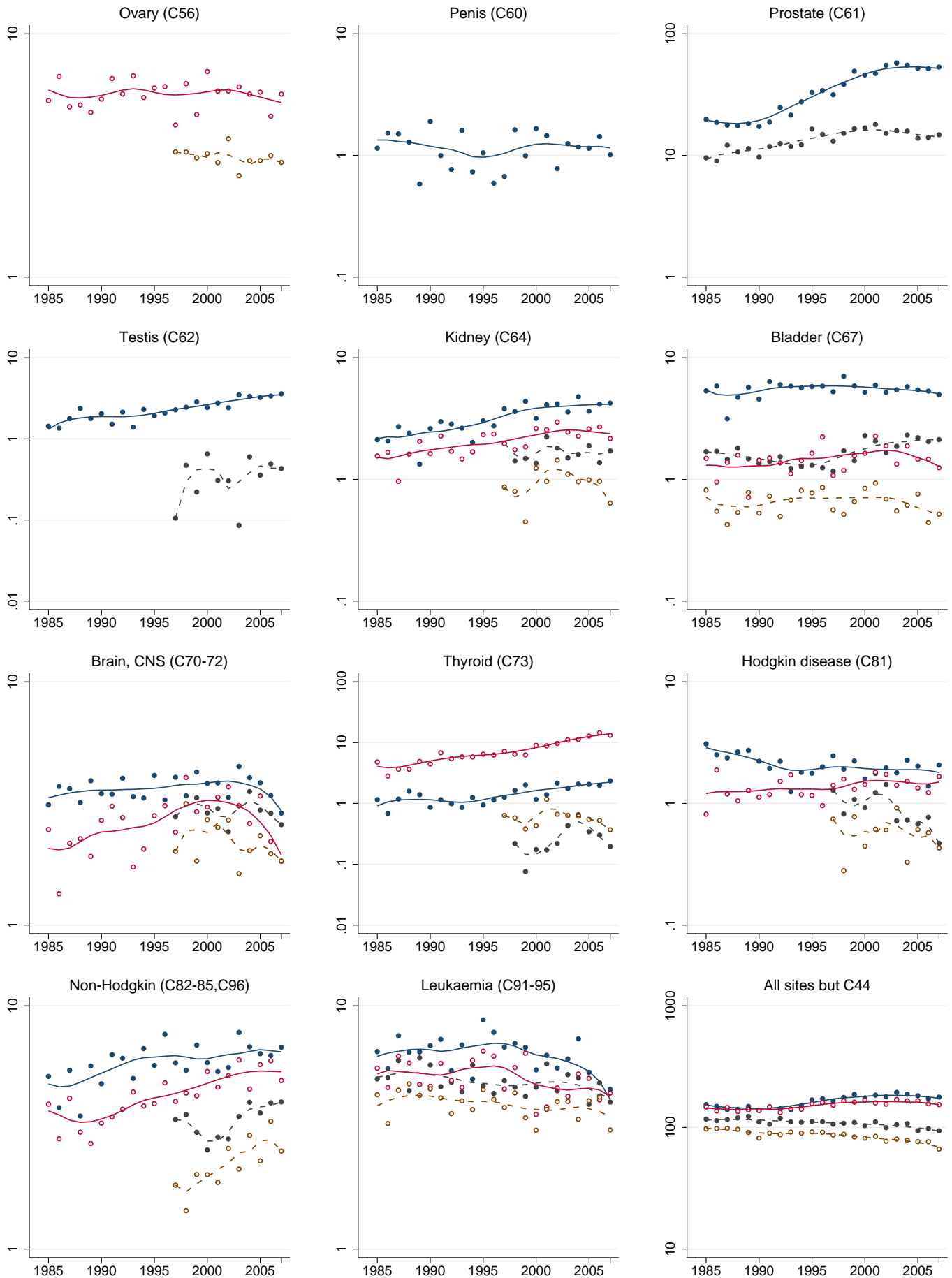


COSTA RICA (1985-2007)

Trends in cancer incidence and mortality by sex, all ages

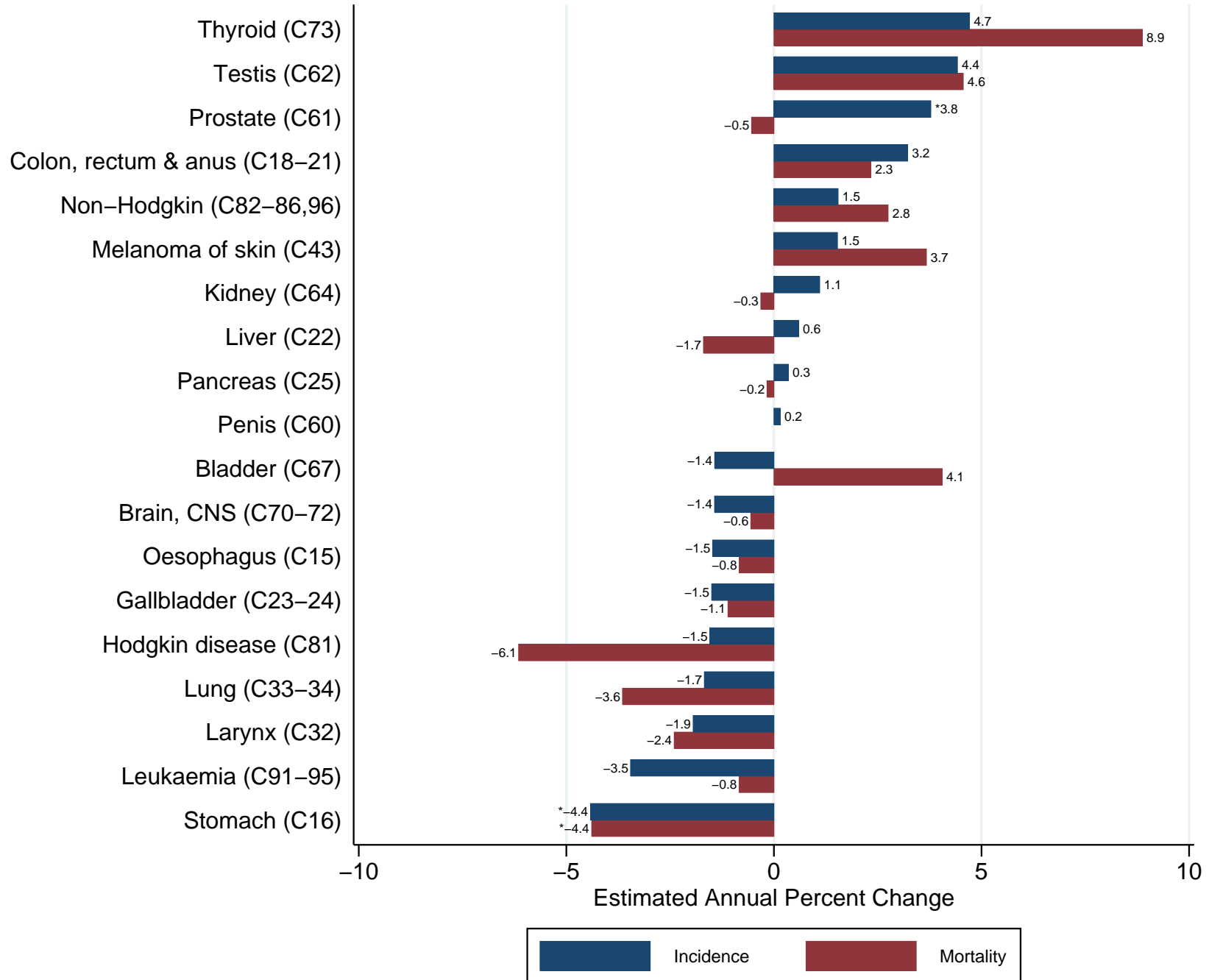
Symbols represent observed rates and lines represent the (LOWESS=0.5) smoothed trend

Age-standardized rates (log scale) per 100,000 person-years



COSTA RICA (1997–2007)

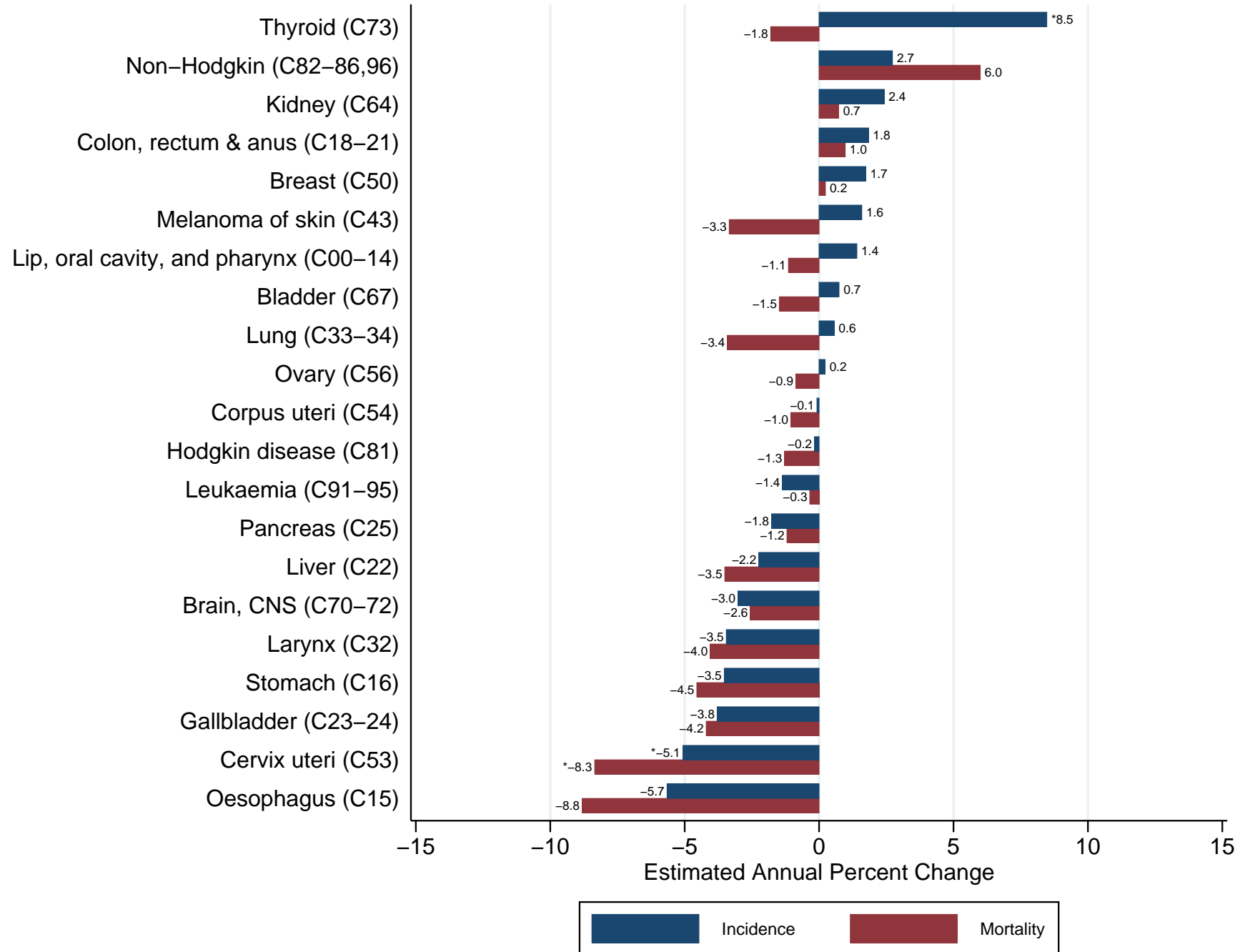
Estimated Annual Percent Change in Incidence and Mortality Rates
by Cancer Site in Males, all ages



* The estimated annual percent change is statistically different from zero ($p \leq .05$)

COSTA RICA (1997–2007)

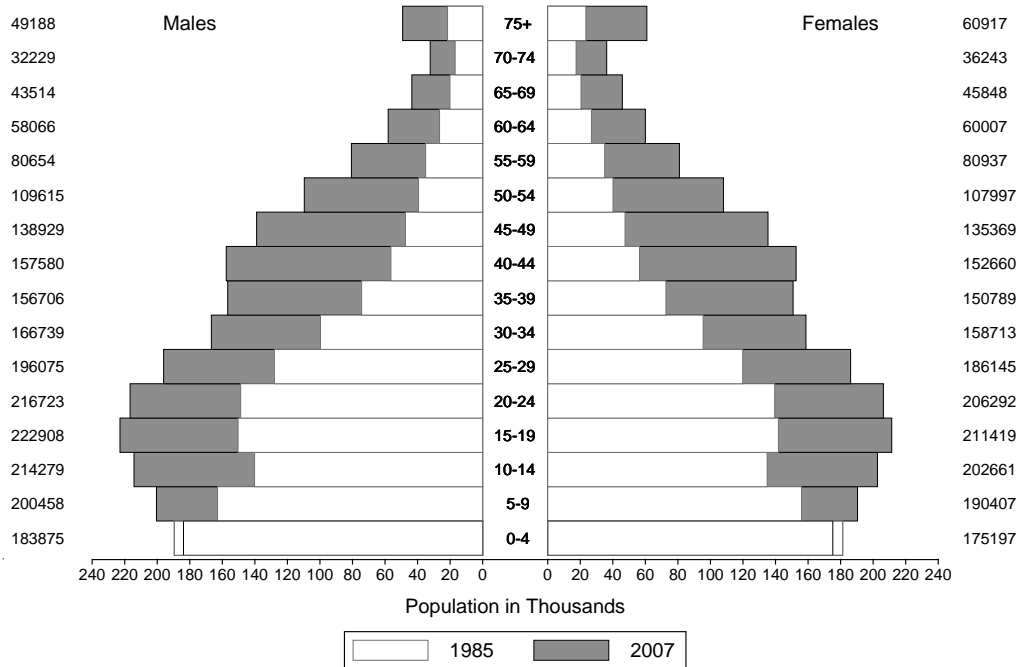
Estimated Annual Percent Change in Incidence and Mortality Rates
by Cancer Site in Females, all ages



* The estimated annual percent change is statistically different from zero ($p < .05$)

COSTA RICA (1985-2007)

Average annual person-years



Note: Population values shown for year 2007